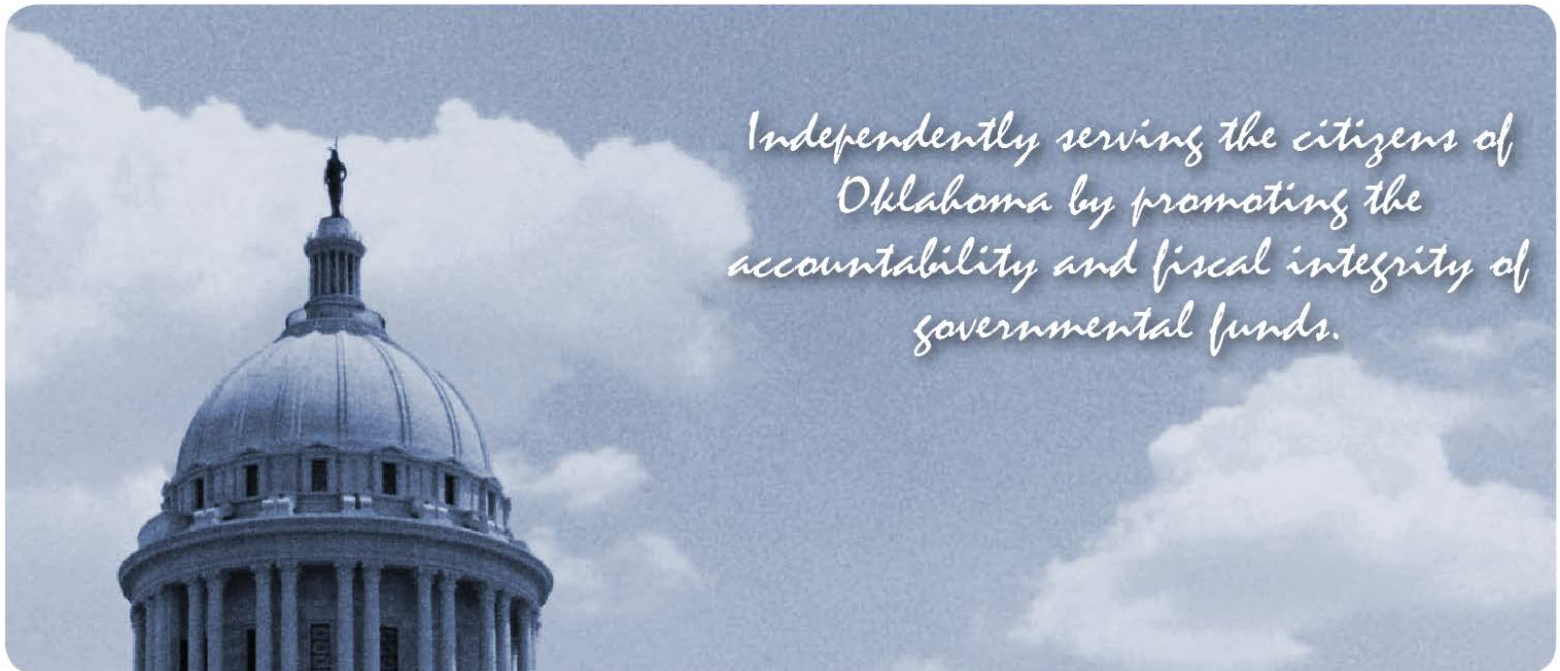


CONTRACT AUDIT

OKLAHOMA HORSE RACING COMMISSION AUDIT REPORT OF OPERATIONS ALL TRACKS - RACE DAYS AND SIMULCAST DAYS 2017

January 1, 2017 through December 31, 2017



Oklahoma State
Auditor & Inspector
Gary A. Jones, CPA, CFE

**OKLAHOMA HORSE RACING COMMISSION
STATISTICAL REPORT OF OPERATIONS
ALL TRACKS – LIVE RACE DAYS
AND SIMULCAST DAYS
FOR THE CALENDAR YEAR 2017**

This publication, issued by the Oklahoma State Auditor and Inspector's Office as authorized by 74 O.S. § 212, has not been printed, but is available on the agency's website (www.sai.ok.gov) and in the Oklahoma Department of Libraries Publications Clearinghouse Digital Collection (<http://digitalprairie.ok.gov/cdm/search/collection/audits/>) pursuant to 65 O.S. § 3-114.



Oklahoma State Auditor & Inspector

2300 N. Lincoln Blvd. • State Capitol, Room 100 • Oklahoma City, OK 73105 • Phone: 405.521.3495 • Fax: 405.521.3426

March 6, 2018

**TO THE MEMBERS OF THE OKLAHOMA
HORSE RACING COMMISSION**

Transmitted herewith is the Statistical Report of Operations for all Live Race Days and Simulcast Days held at Fair Meadows, Remington Park, and Will Rogers Downs during the calendar year 2017. The report is a result of our monitoring and data accumulation in accordance with the State Auditor and Inspector's Contract with the Oklahoma Horse Racing Commission (OHRC) and Title 3A of the Oklahoma Statutes for pari-mutuel racing.

The goal of the State Auditor and Inspector is to promote accountability and fiscal integrity in state and local government. Maintaining our independence as we provide this service to the taxpayers of Oklahoma is of the utmost importance.

We wish to take this opportunity to express our appreciation for the assistance and cooperation extended to our Office during our engagement.

Sincerely,

A handwritten signature in blue ink, reading "Gary A. Jones". The signature is fluid and cursive, with the first name "Gary" being the most prominent.

GARY A. JONES, CPA, CFE
OKLAHOMA STATE AUDITOR & INSPECTOR

**OKLAHOMA HORSE RACING COMMISSION
STATISTICAL REPORT OF OPERATIONS
ALL TRACKS– LIVE RACE DAYS AND SIMULCAST DAYS
FOR THE CALENDAR YEAR 2017**

TABLE OF CONTENTS

	<u>PAGE</u>
INTRODUCTORY COMMENTS	iii
STATE AUDITOR AND INSPECTOR LETTER	1
ALL TRACKS – LIVE RACE DAYS AND SIMULCAST DAYS	
DISTRIBUTION SUMMARY OF NET WAGERED	2
DISTRIBUTION SUMMARY OF NET WAGERED – LIVE RACE DAYS	3
DISTRIBUTION SUMMARY OF NET WAGERED - SIMULCAST DAYS	4
NET WAGERED BY POOL	5
NET WAGERED BY BREED	6
PRIOR YEAR COMPARISON OF DISTRIBUTION SUMMARY OF NET WAGERED	7
PRIOR YEAR COMPARISON OF OTHER STATISTICAL INFORMATION	8
FAIR MEADOWS – LIVE RACE DAYS AND SIMULCAST DAYS	
DISTRIBUTION SUMMARY OF NET WAGERED	9
DISTRIBUTION SUMMARY OF NET WAGERED – LIVE RACE DAYS	10
DISTRIBUTION SUMMARY OF NET WAGERED - SIMULCAST DAYS	11
NET WAGERED BY POOL	12
NET WAGERED BY BREED	13
PRIOR YEAR COMPARISON OF DISTRIBUTION SUMMARY OF NET WAGERED	14
PRIOR YEAR COMPARISON OF OTHER STATISTICAL INFORMATION	15
REMINGTON PARK – LIVE RACE DAYS AND SIMULCAST DAYS	
DISTRIBUTION SUMMARY OF NET WAGERED	16
DISTRIBUTION SUMMARY OF NET WAGERED – LIVE RACE DAYS	17
DISTRIBUTION SUMMARY OF NET WAGERED - SIMULCAST DAYS	18
NET WAGERED BY POOL	19
NET WAGERED BY BREED	20
PRIOR YEAR COMPARISON OF DISTRIBUTION SUMMARY OF NET WAGERED	21
PRIOR YEAR COMPARISON OF OTHER STATISTICAL INFORMATION	22

**OKLAHOMA HORSE RACING COMMISSION
STATISTICAL REPORT OF OPERATIONS
ALL TRACKS— LIVE RACE DAYS AND SIMULCAST DAYS
FOR THE CALENDAR YEAR 2017**

TABLE OF CONTENTS
(continued)

	<u>PAGE</u>
WILL ROGERS DOWNS – LIVE RACE DAYS AND SIMULCAST DAYS	
DISTRIBUTION SUMMARY OF NET WAGERED	23
DISTRIBUTION SUMMARY OF NET WAGERED – LIVE RACE DAYS	24
DISTRIBUTION SUMMARY OF NET WAGERED - SIMULCAST DAYS	25
NET WAGERED BY POOL	26
NET WAGERED BY BREED	27
PRIOR YEAR COMPARISON OF DISTRIBUTION SUMMARY OF NET WAGERED	28
PRIOR YEAR COMPARISON OF OTHER STATISTICAL INFORMATION	29
 ENDNOTES	 30
 APPENDIX	 31

INTRODUCTORY COMMENTS

Statistical data and information contained herein are for presentation purposes. For substantiation of financial information, refer to end-of-meet financial data by individual racing associations or fairs. Summations may differ due to rounding.

Statistical data for this report is presented as a summary of wagers (handle), distribution of fees, commissions, and purses for each race meeting by association or fair. This data does not purport to replace any association or independent auditor's end-of-meet conclusions.

Some pool types have been combined in the all-tracks portion of this report, as not all pool types were wagered on, at each track. Please refer to the individual race meeting reports for actual pool totals. Data contained herein is a summation of the following individual reports:

- Fair Meadows – State Fair Race Meeting – 2017
- Fair Meadows – Simulcast Race Days – 2017
- Remington Park – Fall Thoroughbred Race Meeting – 2017
- Remington Park – Mixed Breed Race Meeting – 2017
- Remington Park – Simulcast Race Days – 2017
- Will Rogers Downs – Thoroughbred Race Meeting – 2017
- Will Rogers Downs – Mixed Breed Race Meeting – 2017
- Will Rogers Downs – Simulcast Race Days – 2017

Reference notes behind titles (See Note) indicate clarifying data in the Endnotes of this report. A glossary of report terms, titles, and headings can be found in the Appendix.



Oklahoma State Auditor & Inspector

2300 N. Lincoln Blvd. • State Capitol, Room 100 • Oklahoma City, OK 73105 • Phone: 405.521.3495 • Fax: 405.521.3426

TO THE MEMBERS OF THE OKLAHOMA HORSE RACING COMMISSION

We performed an audit in accordance with the OHRC Horse Racing Contract and Title 3A of the Oklahoma Statutes. The information presented in this report is derived from the horse racing data obtained from the American Tote Company, Sportech, and the United Tote Company for the period January 1, 2017 through December 31, 2017.

Because our procedures do not constitute an audit conducted in accordance with generally accepted auditing standards, we do not express such an opinion on the information. This report relates only to this information and does not extend to any financial statements of the racetrack or racino.

In planning and performing these procedures, we considered the internal control structure of the pari-mutuel departments; however, our procedures were substantially less in scope than the procedures we would have applied if we had been engaged to express an opinion on the internal controls. Accordingly, we do not express an opinion on their internal control structure.

Sincerely,

A handwritten signature in blue ink, reading "Gary A. Jones", is positioned below the word "Sincerely,".

GARY A. JONES, CPA, CFE
OKLAHOMA STATE AUDITOR & INSPECTOR

March 6, 2018

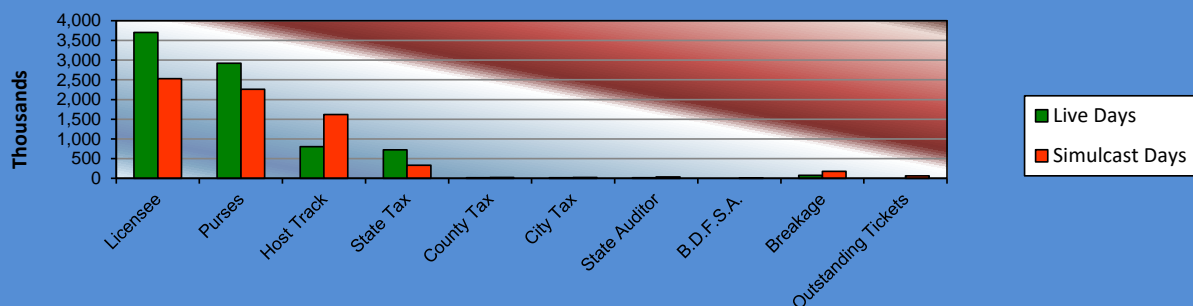
**OKLAHOMA HORSE RACING COMMISSION
STATISTICAL REPORT OF OPERATIONS
ALL TRACKS - LIVE DAYS AND SIMULCAST DAYS
DISTRIBUTION SUMMARY OF NET WAGERED
JANUARY 1, 2017 THROUGH DECEMBER 31, 2017**

	Live Days	Exports (see Note 1)	Total	Simulcast Days	Grand Total
NET WAGERED	\$23,541,125.50	\$104,126,465.03	\$127,667,590.53	\$33,029,080.00	\$160,696,670.53
COMMISSIONS:					
Licensee	1,944,674.61	1,757,404.15	\$3,702,078.76	2,526,191.84	\$6,228,270.60
Purses	1,666,817.79	1,254,279.56	\$2,921,097.35	2,256,896.39	\$5,177,993.74
Host Track	805,825.64	0.00	\$805,825.64	1,618,472.82	\$2,424,298.46
State Tax	411,432.71	309,833.08	\$721,265.79	334,602.41	\$1,055,868.20
County Tax (See Note 4)	17,535.39	0.00	\$17,535.39	21,759.11	\$39,294.50
City Tax (See Note 4)	17,535.39	0.00	\$17,535.39	21,759.11	\$39,294.50
State Auditor	15,202.28	0.00	\$15,202.28	32,119.66	\$47,321.94
Breeding Development Fund Special Account (B.D.F.S.A.)	23,219.48	49,773.60	\$72,993.08	693.10	\$73,686.18
OTHERS:					
Breakage	113,112.44	0.00	\$113,112.44	175,154.57	\$288,267.01
Outstanding Tickets (See Note 3)	0.00	0.00	\$0.00	60,853.90	\$60,853.90
TOTAL COMMISSIONS AND OTHERS:	\$5,015,355.73	\$3,371,290.39	\$8,386,646.12	\$7,048,502.91	\$15,435,149.03
NET PAID TO THE PUBLIC	\$18,525,769.77	\$100,755,174.64	\$119,280,944.41	\$25,980,577.09	\$145,261,521.50

NET WAGERED \$160,696,670.53

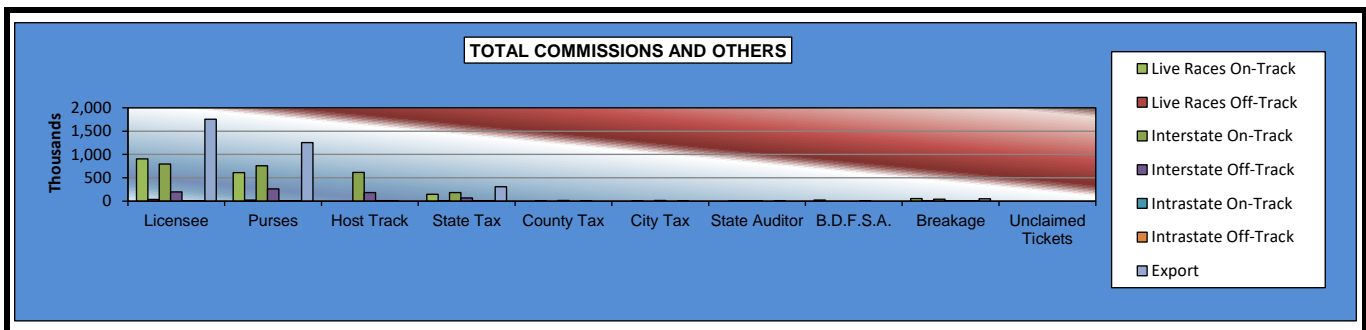
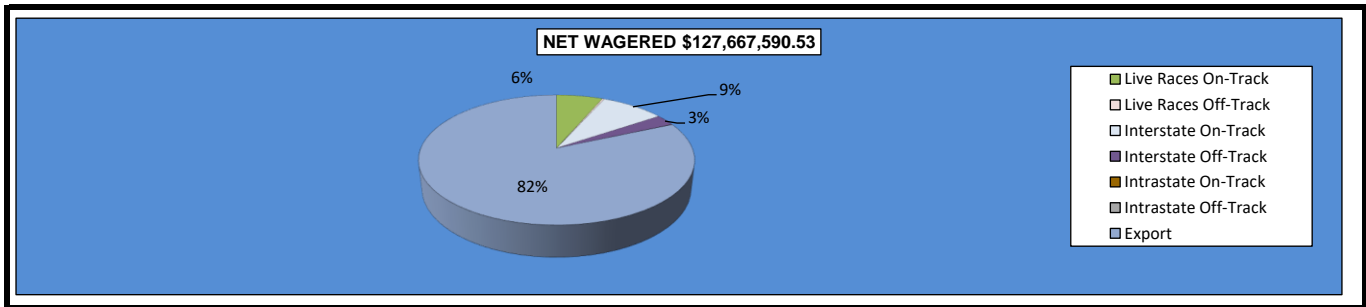


TOTAL COMMISSIONS AND OTHERS



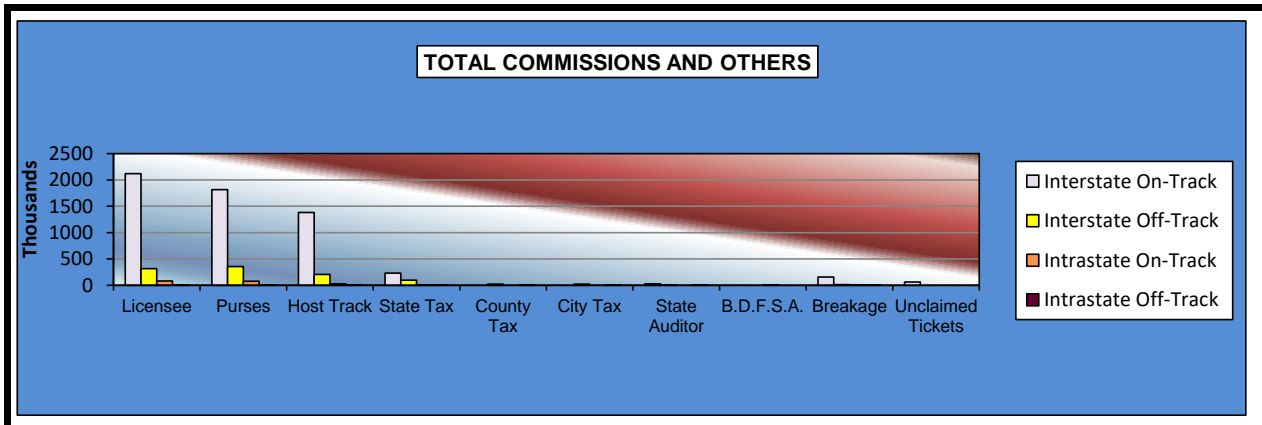
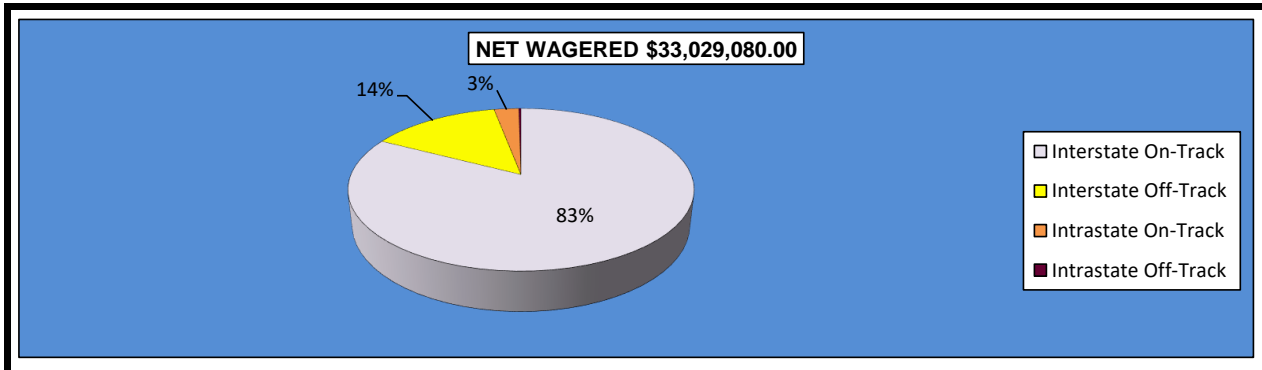
**OKLAHOMA HORSE RACING COMMISSION
STATISTICAL REPORT OF OPERATIONS
ALL TRACKS - LIVE DAYS AND SIMULCAST DAYS
DISTRIBUTION SUMMARY OF NET WAGERED-LIVE DAYS
JANUARY 1, 2017 THROUGH DECEMBER 31, 2017**

	Live Days							
	Live		Interstate Import		Intrastate Import		Export	Grand Total
	On-Track	OTW	On-Track	OTW	On-Track	OTW		
NET WAGERED	\$8,272,832.10	\$334,094.20	\$11,305,541.50	\$3,547,058.00	\$65,999.90	\$15,599.80	\$104,126,465.03	\$127,667,590.53
COMMISSIONS:								
Licensee	904,755.17	39,798.00	794,610.71	198,077.55	6,173.08	1,260.10	1,757,404.15	\$3,702,078.76
Purses	611,579.89	24,799.28	760,766.92	263,942.04	4,563.19	1,166.47	1,254,279.56	\$2,921,097.35
Host Track	0.00	0.00	617,838.17	185,539.42	1,980.07	467.98	0.00	\$805,825.64
State Tax	149,066.24	6,681.88	183,111.42	70,941.21	1,319.97	311.99	309,833.08	\$721,265.79
County Tax (See Note 4)	0.00	1,503.43	0.00	15,961.76	0.00	70.20	0.00	\$17,535.39
City Tax (See Note 4)	0.00	1,503.43	0.00	15,961.76	0.00	70.20	0.00	\$17,535.39
State Auditor	0.00	334.09	11,305.54	3,547.05	0.00	15.60	0.00	\$15,202.28
Breeding Development Fund								
Special Account (B.D.F.S.A.)	23,022.59	0.00	0.00	0.00	196.89	0.00	49,773.60	\$72,993.08
OTHERS:								
Breakage	57,237.18	1,086.45	43,674.68	10,769.67	291.39	53.07	0.00	\$113,112.44
Outstanding Tickets	0.00	0.00	0.00	0.00	0.00	0.00	0.00	\$0.00
TOTAL COMMISSIONS AND OTHERS:	\$1,745,661.07	\$75,706.56	\$2,411,307.44	\$764,740.46	\$14,524.59	\$3,415.61	\$3,371,290.39	\$8,386,646.12
NET PAID TO THE PUBLIC	\$6,527,171.03	\$258,387.64	\$8,894,234.06	\$2,782,317.54	\$51,475.31	\$12,184.19	\$100,755,174.64	\$119,280,944.41



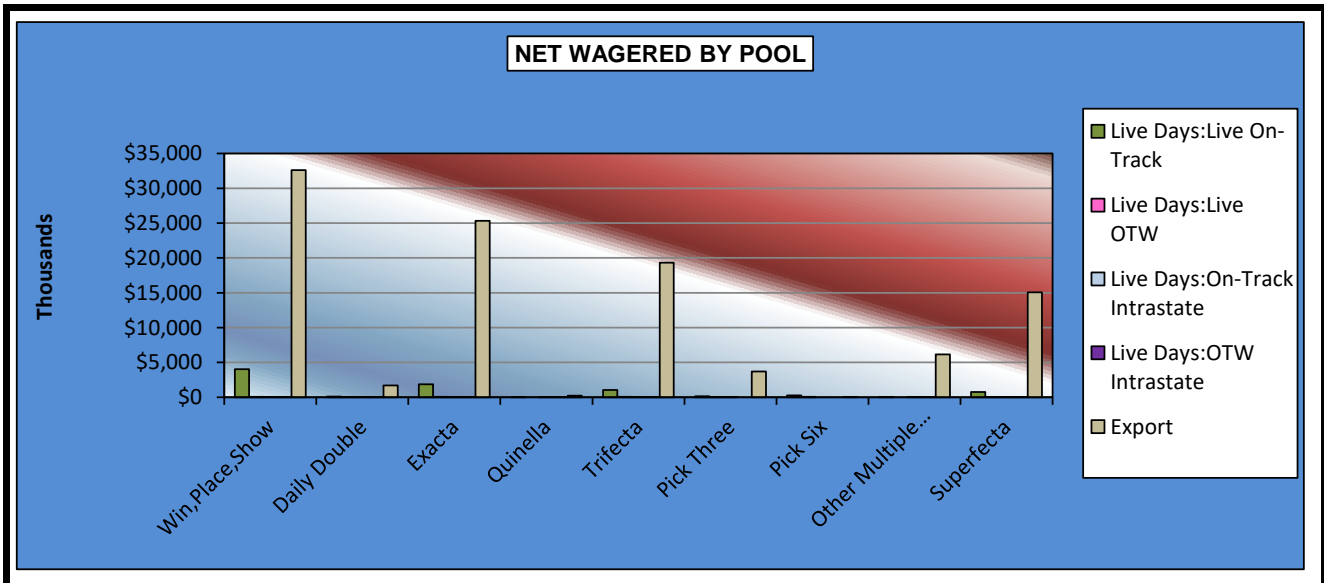
OKLAHOMA HORSE RACING COMMISSION
STATISTICAL REPORT OF OPERATIONS
ALL TRACKS - LIVE DAYS AND SIMULCAST DAYS
DISTRIBUTION SUMMARY OF NET WAGERED-SIMULCAST DAYS
JANUARY 1, 2017 THROUGH DECEMBER 31, 2017

	Simulcast Days				Grand Total
	Interstate Import		Intrastate Import		
	On-Track	OTW	On-Track	OTW	
NET WAGERED	\$27,284,313.70	\$4,753,891.10	\$909,410.80	\$81,464.40	\$33,029,080.00
COMMISSIONS:					
Licensee	2,118,160.41	316,907.93	84,228.97	6,894.53	\$2,526,191.84
Purses	1,818,006.62	354,330.78	78,456.68	6,102.31	\$2,256,896.39
Host Track	1,381,553.21	207,207.51	27,268.14	2,443.96	\$1,618,472.82
State Tax	232,898.49	95,309.13	4,765.50	1,629.29	\$334,602.41
County Tax (See Note 4)	0.00	21,392.51	0.00	366.60	\$21,759.11
City Tax (See Note 4)	0.00	21,392.51	0.00	366.60	\$21,759.11
State Auditor	27,284.32	4,753.88	0.00	81.46	\$32,119.66
Breeding Development Fund Special Account (B.D.F.S.A.)	0.00	0.00	693.10	0.00	\$693.10
OTHERS:					
Breakage	156,319.02	14,469.16	4,025.74	340.65	\$175,154.57
Outstanding Tickets	60,853.90	0.00	0.00	0.00	\$60,853.90
TOTAL COMMISSIONS AND OTHERS:	\$5,795,075.97	\$1,035,763.41	\$199,438.13	\$18,225.40	\$7,048,502.91
NET PAID TO THE PUBLIC	\$21,489,237.73	\$3,718,127.69	\$709,972.67	\$63,239.00	\$25,980,577.09



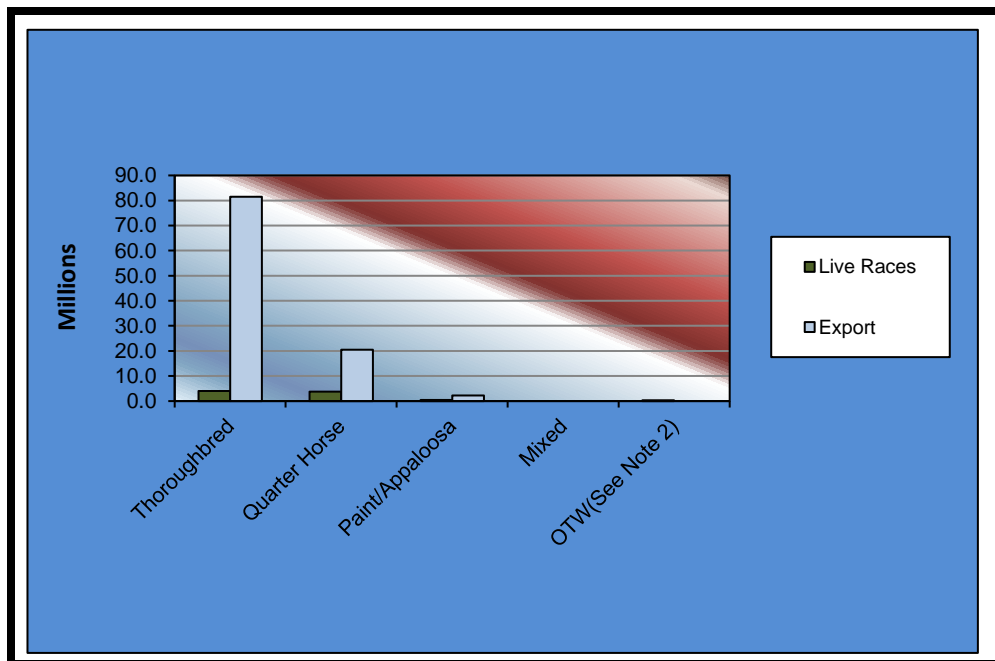
**OKLAHOMA HORSE RACING COMMISSION
STATISTICAL REPORT OF OPERATIONS
ALL TRACKS - LIVE DAYS AND SIMULCAST DAYS
NET WAGERED BY POOL
JANUARY 1, 2017 THROUGH DECEMBER 31, 2017**

	Live Days					Grand Total
	Live Races		Intrastate Import		Export	
	On-Track	OTW	On-Track	OTW		
Win,Place,Show	\$4,035,047.00	\$67,357.00	\$18,043.00	\$4,257.00	\$32,589,157.55	\$36,713,861.55
Daily Double	90,484.00	5,409.00	796.00	31.00	1,718,998.34	\$1,815,718.34
Exacta	1,868,348.00	72,154.00	16,292.00	4,145.00	25,320,941.30	\$27,281,880.30
Quinella	22,805.00	0.00	526.00	141.00	249,598.56	\$273,070.56
Trifecta	1,062,179.50	71,539.50	13,212.50	4,745.50	19,336,651.23	\$20,488,328.23
Pick Three	161,662.00	19,495.00	1,283.50	4.00	3,697,705.79	\$3,880,150.29
Pick Six	281,198.40	61,633.40	0.00	0.00	2,119.50	\$344,951.30
Other Multiple Picks	3,722.00	0.00	2,803.50	363.00	6,158,577.51	\$6,165,466.01
Superfecta	747,386.20	36,506.30	13,043.40	1,913.30	15,052,715.25	\$15,851,564.45
NET WAGERED	\$8,272,832.10	\$334,094.20	\$65,999.90	\$15,599.80	\$104,126,465.03	\$112,814,991.03



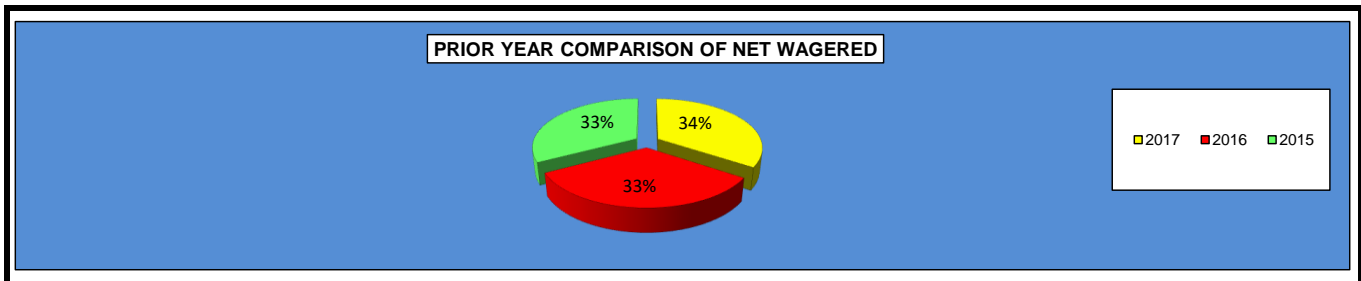
**OKLAHOMA HORSE RACING COMMISSION
STATISTICAL REPORT OF OPERATIONS
ALL TRACKS - LIVE DAYS AND SIMULCAST DAYS
NET WAGERED BY BREED
JANUARY 1, 2017 THROUGH DECEMBER 31, 2017**

	Live Days		Grand Total
	Live Races	Export	
Thoroughbred	\$4,053,129.60	\$81,468,388.56	\$85,521,518.16
Quarter Horse	3,716,168.30	20,439,133.06	\$24,155,301.36
Paint/Appaloosa	503,534.20	2,218,943.41	\$2,722,477.61
Mixed	0.00	0.00	\$0.00
OTW(See Note 2)	334,094.20	0.00	\$334,094.20
Net Wagered	\$8,606,926.30	\$104,126,465.03	\$112,733,391.33



**OKLAHOMA HORSE RACING COMMISSION
STATISTICAL REPORT OF OPERATIONS
ALL TRACKS - LIVE DAYS AND SIMULCAST DAYS
PRIOR YEAR COMPARISON - DISTRIBUTION SUMMARY OF NET WAGERED
JANUARY 1, 2017 THROUGH DECEMBER 31, 2017**

	2017 (See Note 1)	2016 (See Note 1)	2015 (See Note 1)	2016 to 2017 Increase (Decrease)	% Increase (Decrease)	2015 to 2016 Increase (Decrease)	% Increase (Decrease)
NET WAGERED	\$160,696,670.53	\$154,432,193.75	\$153,436,173.16	\$6,264,476.78	4.06%	\$996,020.59	0.65%
COMMISSIONS:							
Licensee	6,228,270.60	6,239,490.24	6,808,964.61	(11,219.64)	-0.18%	(569,474.37)	-8.36%
Purses	5,177,993.74	5,272,063.20	5,674,249.21	(94,069.46)	-1.78%	(402,186.01)	-7.09%
Host Track	2,424,298.46	2,570,794.82	2,699,515.21	(146,496.36)	-5.70%	(128,720.39)	-4.77%
State Tax	1,055,868.20	1,099,158.73	1,156,620.53	(43,290.53)	-3.94%	(57,461.80)	-4.97%
County Tax (See Note 4)	39,294.50	48,374.52	61,570.14	(9,080.02)	-18.77%	(13,195.62)	-21.43%
City Tax (See Note 4)	39,294.50	48,374.52	61,570.14	(9,080.02)	-18.77%	(13,195.62)	-21.43%
State Auditor	47,321.94	50,705.20	54,580.19	(3,383.26)	-6.67%	(3,874.99)	-7.10%
Breeding Development Fund							
Special Account	73,686.18	68,996.19	74,899.64	4,689.99	6.80%	(5,903.45)	-7.88%
OTHERS:							
Breakage	288,267.01	314,923.15	336,414.60	(26,656.14)	-8.46%	(21,491.45)	-6.39%
Outstanding Tickets	60,853.90	70,119.43	90,901.24	(9,265.53)	-13.21%	(20,781.81)	-22.86%
TOTAL COMMISSIONS AND OTHERS	\$15,435,149.03	\$15,783,000.00	\$17,019,285.51	(\$347,850.97)	-2.20%	(\$1,236,285.51)	-7.26%



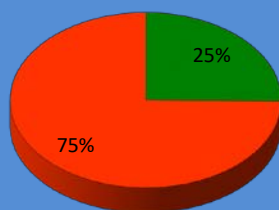
OKLAHOMA HORSE RACING COMMISSION
STATISTICAL REPORT OF OPERATIONS
ALL TRACKS - LIVE DAYS AND SIMULCAST DAYS
PRIOR YEAR COMPARISON - DISTRIBUTION SUMMARY OF NET WAGERED
JANUARY 1, 2017 THROUGH DECEMBER 31, 2017

	2017 (See Note 1)	2016 (See Note 1)	2015 (See Note 1)	2016 to 2017 Increase (Decrease)	% Increase (Decrease)	2015 to 2016 Increase (Decrease)	% Increase (Decrease)
NET WAGERED	\$160,696,670.53	\$154,432,193.75	\$153,436,173.16	\$6,264,476.78	4.06%	\$996,020.59	0.65%
Number of Race Days	1059	1051	1060	8	0.76%	(9)	-0.85%
Number of Live Days	208	209	208	(1)	-0.48%	1	0.48%
Average Daily Handle	\$151,743.79	\$146,938.34	\$144,751.11	\$4,805.45	3.27%	\$2,187.23	1.51%
LIVE RACES							
Average Wagered Per Race:							
Thoroughbred	\$97,515.98	\$88,225.36	\$68,081.35	\$9,290.62	10.53%	\$20,144.01	29.59%
Quarter Horse	\$25,399.90	\$24,242.52	\$24,787.02	\$1,157.38	4.77%	(\$544.50)	-2.20%
Paint/Appaloosa	\$13,890.19	\$11,925.30	\$20,832.58	\$1,964.89	16.48%	(\$8,907.28)	-42.76%
Mixed	\$0.00	\$0.00	\$0.00	\$0.00	0.00%	\$0.00	0.00%
OTW	\$274.07	\$352.61	\$482.56	(\$78.54)	-22.27%	(\$129.95)	-26.93%
Average Races Per Day:							
Thoroughbred	5.03	4.20	4.94	0.83	19.76%	(0.74)	-14.98%
Quarter Horse	4.42	4.55	4.43	(0.13)	-2.86%	0.12	2.71%
Paint/Appaloosa	0.92	0.94	0.85	(0.02)	-2.13%	0.09	10.59%
Mixed	0.00	0.00	0.00	0.00	0.00%	0.00	0.00%
OTW	7.07	8.56	9.92	(1.49)	-17.41%	(1.36)	-13.71%

**OKLAHOMA HORSE RACING COMMISSION
STATISTICAL REPORT OF OPERATIONS
FAIR MEADOWS AT TULSA-LIVE RACE DAYS AND SIMULCAST DAYS
DISTRIBUTION SUMMARY OF NET WAGERED
JANUARY 1, 2017 THROUGH DECEMBER 31, 2017**

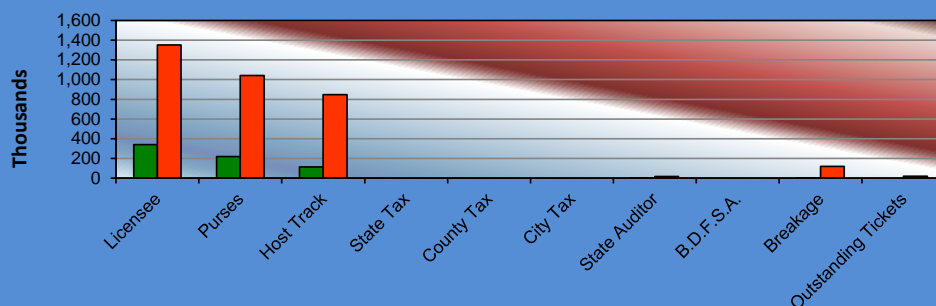
	Live Days	Exports (see Note 1)	Total	Simulcast Days	Grand Total
NET WAGERED	\$2,969,492.20	\$2,522,318.22	\$5,491,810.42	\$16,299,066.00	\$21,790,876.42
COMMISSIONS:					
Licensee	288,633.86	51,287.87	\$339,921.73	1,352,597.78	\$1,692,519.51
Purses	192,525.67	25,684.92	\$218,210.59	1,040,043.42	\$1,258,254.01
Host Track	114,417.12	0.00	\$114,417.12	848,574.26	\$962,991.38
State Tax	0.00	0.00	\$0.00	0.00	\$0.00
County Tax (See Note 4)	0.00	0.00	\$0.00	0.00	\$0.00
City Tax (See Note 4)	0.00	0.00	\$0.00	0.00	\$0.00
State Auditor	2,149.97	0.00	\$2,149.97	15,627.93	\$17,777.90
Breeding Development Fund Special Account (B.D.F.S.A.)	3,667.29	473.80	\$4,141.09	0.00	\$4,141.09
OTHERS:					
Breakage	15,800.14	0.00	\$15,800.14	119,699.75	\$135,499.89
Outstanding Tickets (See Note 3)	0.00	0.00	\$0.00	20,242.35	\$20,242.35
TOTAL COMMISSIONS AND OTHERS:	\$617,194.05	\$77,446.59	\$694,640.64	\$3,396,785.49	\$4,091,426.13
NET PAID TO THE PUBLIC	\$2,352,298.15	\$2,444,871.63	\$4,797,169.78	\$12,902,280.51	\$17,699,450.29

NET WAGERED \$21,790,876.42



■ Live Days
■ Simulcast Days

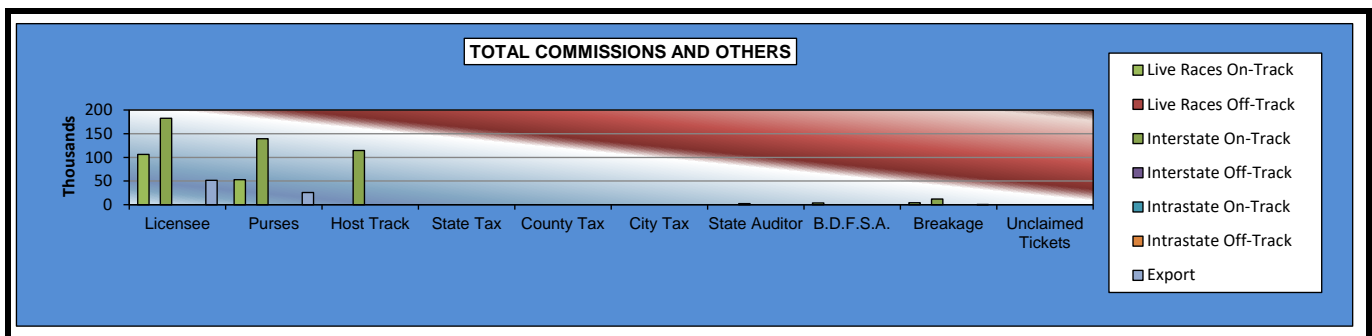
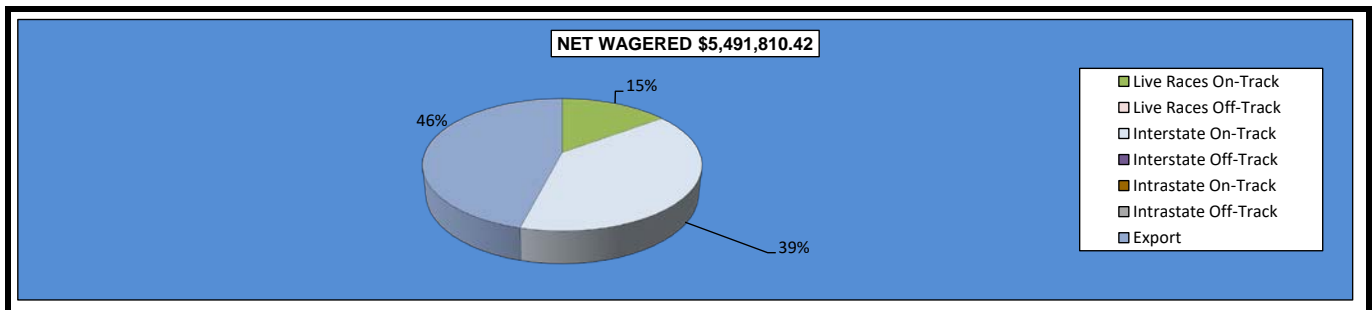
TOTAL COMMISSIONS AND OTHERS



■ Live Days
■ Simulcast Days

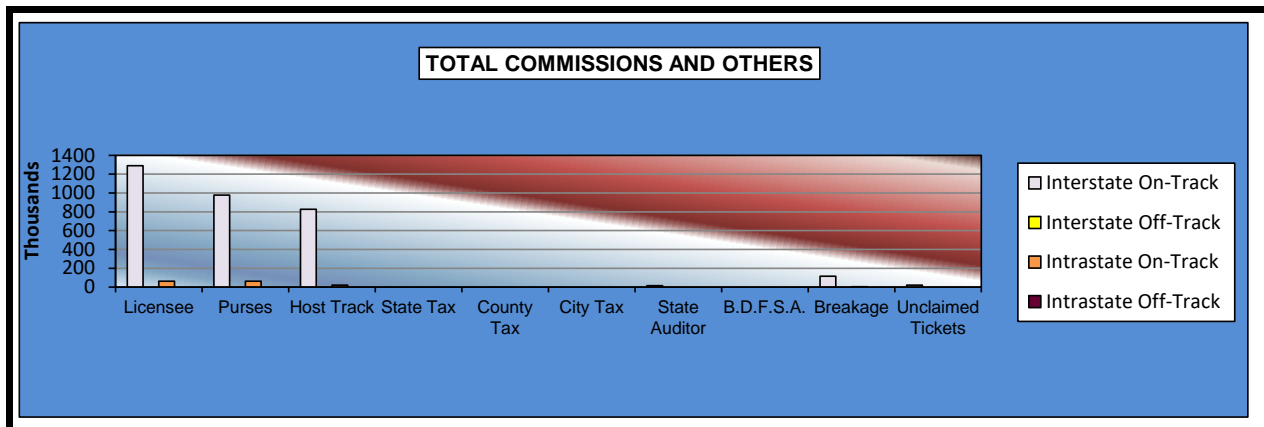
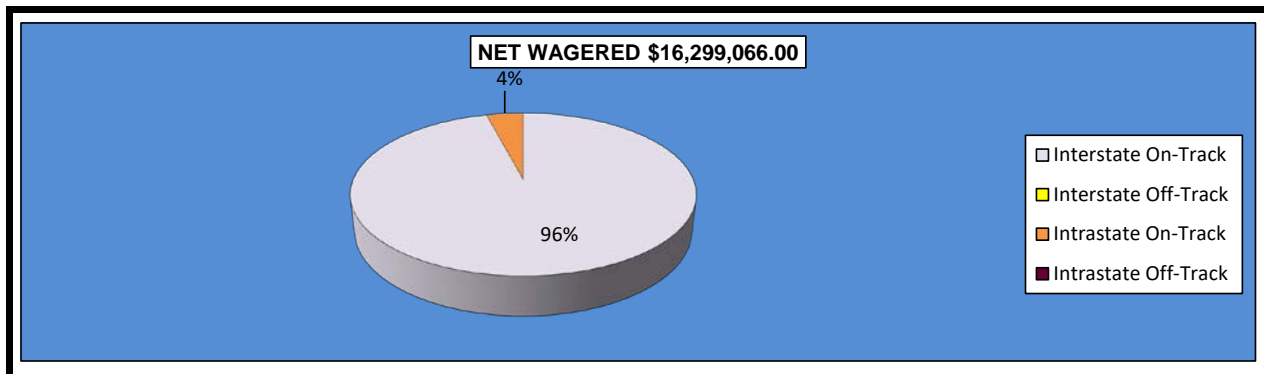
**OKLAHOMA HORSE RACING COMMISSION
STATISTICAL REPORT OF OPERATIONS
FAIR MEADOWS AT TULSA-LIVE RACE DAYS AND SIMULCAST DAYS
DISTRIBUTION SUMMARY OF NET WAGERED-LIVE DAYS
JANUARY 1, 2017 THROUGH DECEMBER 31, 2017**

	Live Days							
	Live		Interstate Import		Intrastate Import		Export	Grand Total
	On-Track	OTW	On-Track	OTW	On-Track	OTW		
NET WAGERED	\$819,521.90	\$0.00	\$2,149,970.30	\$0.00	\$0.00	\$0.00	\$2,522,318.22	\$5,491,810.42
COMMISSIONS:								
Licensee	106,220.05	0.00	182,413.81	0.00	0.00	0.00	51,287.87	\$339,921.73
Purses	53,111.29	0.00	139,414.38	0.00	0.00	0.00	25,684.92	\$218,210.59
Host Track	0.00	0.00	114,417.12	0.00	0.00	0.00	0.00	\$114,417.12
State Tax	0.00	0.00	0.00	0.00	0.00	0.00	0.00	\$0.00
County Tax (See Note 4)	0.00	0.00	0.00	0.00	0.00	0.00	0.00	\$0.00
City Tax (See Note 4)	0.00	0.00	0.00	0.00	0.00	0.00	0.00	\$0.00
State Auditor	0.00	0.00	2,149.97	0.00	0.00	0.00	0.00	\$2,149.97
Breeding Development Fund								
Special Account (B.D.F.S.A.)	3,667.29	0.00	0.00	0.00	0.00	0.00	473.80	\$4,141.09
OTHERS:								
Breakage	4,033.62	0.00	11,766.52	0.00	0.00	0.00	0.00	\$15,800.14
Outstanding Tickets	0.00	0.00	0.00	0.00	0.00	0.00	0.00	\$0.00
TOTAL COMMISSIONS AND OTHERS:	\$167,032.25	\$0.00	\$450,161.80	\$0.00	\$0.00	\$0.00	\$77,446.59	\$694,640.64
NET PAID TO THE PUBLIC	\$652,489.65	\$0.00	\$1,699,808.50	\$0.00	\$0.00	\$0.00	\$2,444,871.63	\$4,797,169.78



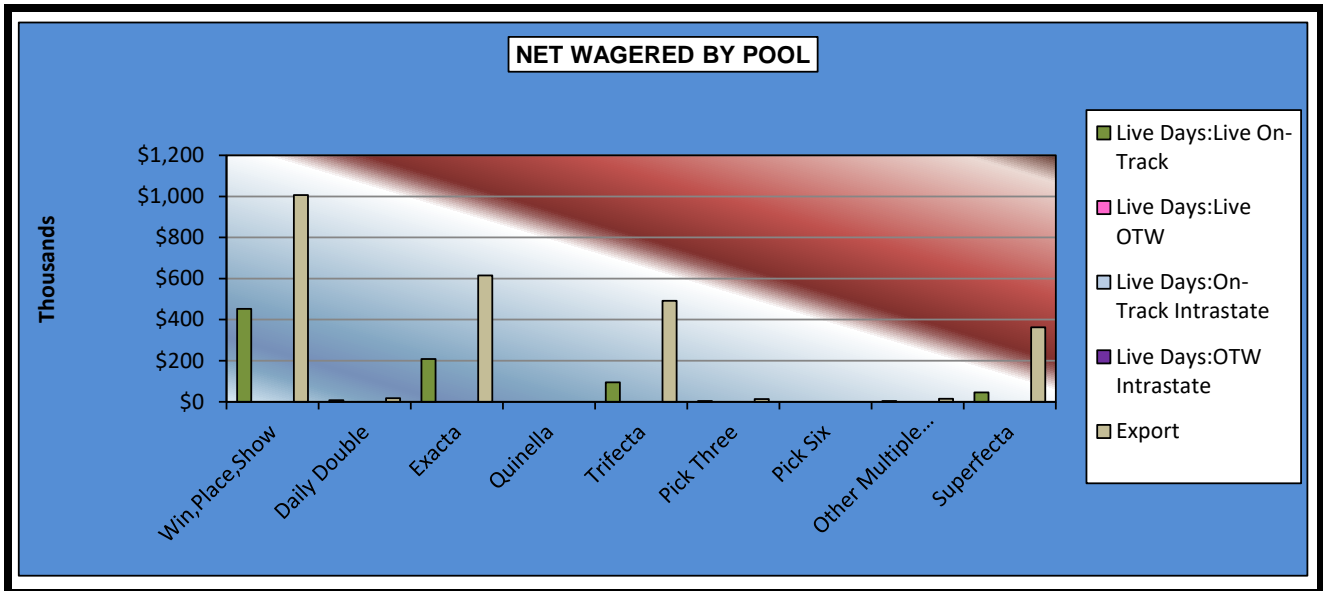
OKLAHOMA HORSE RACING COMMISSION
STATISTICAL REPORT OF OPERATIONS
FAIR MEADOWS AT TULSA-LIVE RACE DAYS AND SIMULCAST DAYS
DISTRIBUTION SUMMARY OF NET WAGERED-SIMULCAST DAYS
JANUARY 1, 2017 THROUGH DECEMBER 31, 2017

	Simulcast Days				Grand Total
	Interstate Import		Intrastate Import		
	On-Track	OTW	On-Track	OTW	
NET WAGERED	\$15,627,931.40	\$0.00	\$671,134.60	\$0.00	\$16,299,066.00
COMMISSIONS:					
Licensee	1,290,706.87	0.00	61,890.91	0.00	\$1,352,597.78
Purses	978,152.51	0.00	61,890.91	0.00	\$1,040,043.42
Host Track	828,440.14	0.00	20,134.12	0.00	\$848,574.26
State Tax	0.00	0.00	0.00	0.00	\$0.00
County Tax (See Note 4)	0.00	0.00	0.00	0.00	\$0.00
City Tax (See Note 4)	0.00	0.00	0.00	0.00	\$0.00
State Auditor	15,627.93	0.00	0.00	0.00	\$15,627.93
Breeding Development Fund Special Account (B.D.F.S.A.)	0.00	0.00	0.00	0.00	\$0.00
OTHERS:					
Breakage	116,646.95	0.00	3,052.80	0.00	\$119,699.75
Outstanding Tickets	20,242.35	0.00	0.00	0.00	\$20,242.35
TOTAL COMMISSIONS AND OTHERS:	\$3,249,816.75	\$0.00	\$146,968.74	\$0.00	\$3,396,785.49
NET PAID TO THE PUBLIC	\$12,378,114.65	\$0.00	\$524,165.86	\$0.00	\$12,902,280.51



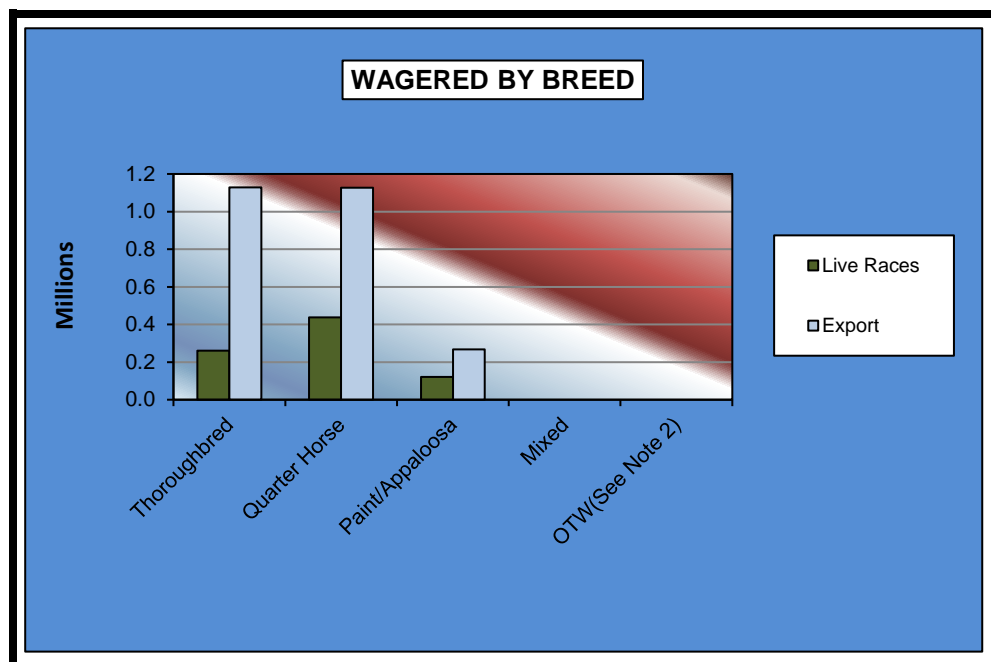
OKLAHOMA HORSE RACING COMMISSION
STATISTICAL REPORT OF OPERATIONS
FAIR MEADOWS AT TULSA-LIVE RACE DAYS AND SIMULCAST DAYS
NET WAGERED BY POOL
JANUARY 1, 2017 THROUGH DECEMBER 31, 2017

	Live Days					Grand Total
	Live Races		Intrastate Import		Export	
	On-Track	OTW	On-Track	OTW		
Win,Place,Show	\$452,793.00	\$0.00	\$0.00	\$0.00	\$1,006,116.99	\$1,458,909.99
Daily Double	8,488.00	0.00	0.00	0.00	17,352.30	\$25,840.30
Exacta	208,848.00	0.00	0.00	0.00	615,507.50	\$824,355.50
Quinella	0.00	0.00	0.00	0.00	0.00	\$0.00
Trifecta	95,513.00	0.00	0.00	0.00	491,340.94	\$586,853.94
Pick Three	3,918.00	0.00	0.00	0.00	14,048.30	\$17,966.30
Pick Six	0.00	0.00	0.00	0.00	0.00	\$0.00
Other Multiple Picks	3,722.00	0.00	0.00	0.00	15,534.70	\$19,256.70
Superfecta	46,239.90	0.00	0.00	0.00	362,417.49	\$408,657.39
NET WAGERED	\$819,521.90	\$0.00	\$0.00	\$0.00	\$2,522,318.22	\$3,341,840.12



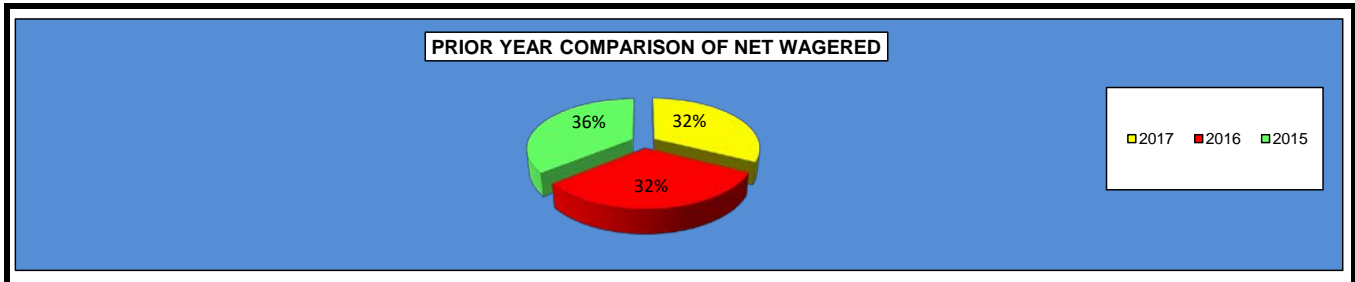
**OKLAHOMA HORSE RACING COMMISSION
STATISTICAL REPORT OF OPERATIONS
FAIR MEADOWS AT TULSA-LIVE RACE DAYS AND SIMULCAST DAYS
NET WAGERED BY BREED
JANUARY 1, 2017 THROUGH DECEMBER 31, 2017**

	Live Days		Grand Total
	Live Races	Export	
Thoroughbred	\$260,888.20	\$1,128,351.97	\$1,389,240.17
Quarter Horse	437,085.00	1,127,000.61	\$1,564,085.61
Paint/Appaloosa	121,548.70	266,965.64	\$388,514.34
Mixed	0.00	0.00	\$0.00
OTW(See Note 2)	0.00	0.00	\$0.00
Net Wagered	\$819,521.90	\$2,522,318.22	\$3,341,840.12



**OKLAHOMA HORSE RACING COMMISSION
STATISTICAL REPORT OF OPERATIONS
FAIR MEADOWS AT TULSA-LIVE RACE DAYS AND SIMULCAST DAYS
PRIOR YEAR COMPARISON - DISTRIBUTION SUMMARY OF NET WAGERED
JANUARY 1, 2017 THROUGH DECEMBER 31, 2017**

	2017 (See Note 1)	2016 (See Note 1)	2015 (See Note 1)	2016 to 2017 Increase (Decrease)	% Increase (Decrease)	2015 to 2016 Increase (Decrease)	% Increase (Decrease)
NET WAGERED	\$21,790,876.42	\$21,239,958.16	\$24,103,995.14	\$550,918.26	2.59%	(\$2,864,036.98)	-11.88%
COMMISSIONS:							
Licensee	1,692,519.51	1,639,981.63	1,877,140.18	52,537.88	3.20%	(237,158.55)	-12.63%
Purses	1,258,254.01	1,213,962.59	1,394,061.16	44,291.42	3.65%	(180,098.57)	-12.92%
Host Track	962,991.38	954,002.67	1,058,564.38	8,988.71	0.94%	(104,561.71)	-9.88%
State Tax	0.00	0.00	0.00	0.00	0.00%	0.00	0.00%
County Tax (See Note 4)	0.00	0.00	0.00	0.00	0.00%	0.00	0.00%
City Tax (See Note 4)	0.00	0.00	0.00	0.00	0.00%	0.00	0.00%
State Auditor	17,777.90	17,633.66	19,998.44	144.24	0.82%	(2,364.78)	-11.82%
Breeding Development Fund							
Special Account	4,141.09	3,916.01	4,497.25	225.08	5.75%	(581.24)	-12.92%
OTHERS:							
Breakage	135,499.89	132,097.55	148,163.56	3,402.34	2.58%	(16,066.01)	-10.84%
Outstanding Tickets	20,242.35	17,965.52	52,622.08	2,276.83	12.67%	(34,656.56)	-65.86%
TOTAL COMMISSIONS AND OTHERS	\$4,091,426.13	\$3,979,559.63	\$4,555,047.05	\$111,866.50	2.81%	(\$575,487.42)	-12.63%



OKLAHOMA HORSE RACING COMMISSION
STATISTICAL REPORT OF OPERATIONS
FAIR MEADOWS AT TULSA-LIVE RACE DAYS AND SIMULCAST DAYS
PRIOR YEAR COMPARISON - DISTRIBUTION SUMMARY OF NET WAGERED
JANUARY 1, 2017 THROUGH DECEMBER 31, 2017

	2017 (See Note 1)	2016 (See Note 1)	2015 (See Note 1)	2016 to 2017 Increase (Decrease)	% Increase (Decrease)	2015 to 2016 Increase (Decrease)	% Increase (Decrease)
NET WAGERED	\$21,790,876.42	\$21,239,958.16	\$24,103,995.14	\$550,918.26	2.59%	(\$2,864,036.98)	-11.88%
Number of Race Days	329	321	330	8	2.49%	(9)	-2.73%
Number of Live Days	34	34	34	0	0.00%	0	0.00%
Average Daily Handle	\$66,233.67	\$66,168.09	\$73,042.41	\$65.58	0.10%	(\$6,874.32)	-9.41%
LIVE RACES							
Average Wagered Per Race:							
Thoroughbred	\$8,368.92	\$6,899.64	\$7,130.02	\$1,469.28	21.30%	(\$230.38)	-3.23%
Quarter Horse	\$9,962.33	\$8,357.85	\$10,276.88	\$1,604.48	19.20%	(\$1,919.03)	-18.67%
Paint/Appaloosa	\$6,369.09	\$4,556.64	\$6,223.04	\$1,812.45	39.78%	(\$1,666.40)	-26.78%
Mixed	\$0.00	\$0.00	\$0.00	\$0.00	0.00%	\$0.00	0.00%
OTW	\$0.00	\$0.00	\$0.00	\$0.00	0.00%	\$0.00	0.00%
Average Races Per Day:							
Thoroughbred	4.88	4.74	5.05	0.14	2.95%	(0.31)	-6.14%
Quarter Horse	4.61	5.44	5.05	(0.83)	-15.26%	0.39	7.72%
Paint/Appaloosa	1.35	1.91	1.40	(0.56)	-29.32%	0.51	36.43%
Mixed	0.00	0.00	0.00	0.00	0.00%	0.00	0.00%
OTW	0.00	0.00	0.00	0.00	0.00%	0.00	0.00%

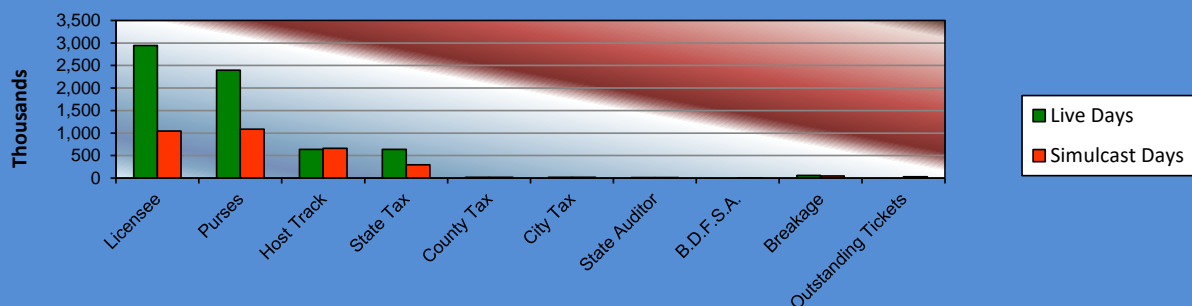
**OKLAHOMA HORSE RACING COMMISSION
STATISTICAL REPORT OF OPERATIONS
REMINGTON PARK-LIVE RACE DAYS AND SIMULCAST DAYS
DISTRIBUTION SUMMARY OF NET WAGERED
JANUARY 1, 2017 THROUGH DECEMBER 31, 2017**

	Live Days	Exports (see Note 1)	Total	Simulcast Days	Grand Total
NET WAGERED	\$19,186,149.80	\$82,071,860.61	\$101,258,010.41	\$14,676,517.00	\$115,934,527.41
COMMISSIONS:					
Licensee	1,548,768.33	1,397,883.53	\$2,946,651.86	1,042,940.87	\$3,989,592.73
Purses	1,387,062.74	1,007,748.44	\$2,394,811.18	1,086,380.04	\$3,481,191.22
Host Track	637,124.36	0.00	\$637,124.36	661,035.05	\$1,298,159.41
State Tax	383,723.03	253,880.63	\$637,603.66	293,530.06	\$931,133.72
County Tax (See Note 4)	17,535.39	0.00	\$17,535.39	21,759.11	\$39,294.50
City Tax (See Note 4)	17,535.39	0.00	\$17,535.39	21,759.11	\$39,294.50
State Auditor	12,306.35	0.00	\$12,306.35	14,524.00	\$26,830.35
Breeding Development Fund Special Account (B.D.F.S.A.)	18,015.44	40,489.59	\$58,505.03	459.25	\$58,964.28
OTHERS:					
Breakage	88,875.75	0.00	\$88,875.75	45,933.86	\$134,809.61
Outstanding Tickets (See Note 3)	0.00	0.00	\$0.00	31,834.14	\$31,834.14
TOTAL COMMISSIONS AND OTHERS:	\$4,110,946.78	\$2,700,002.19	\$6,810,948.97	\$3,220,155.49	\$10,031,104.46
NET PAID TO THE PUBLIC	\$15,075,203.02	\$79,371,858.42	\$94,447,061.44	\$11,456,361.51	\$105,903,422.95

NET WAGERED \$115,934,527.41

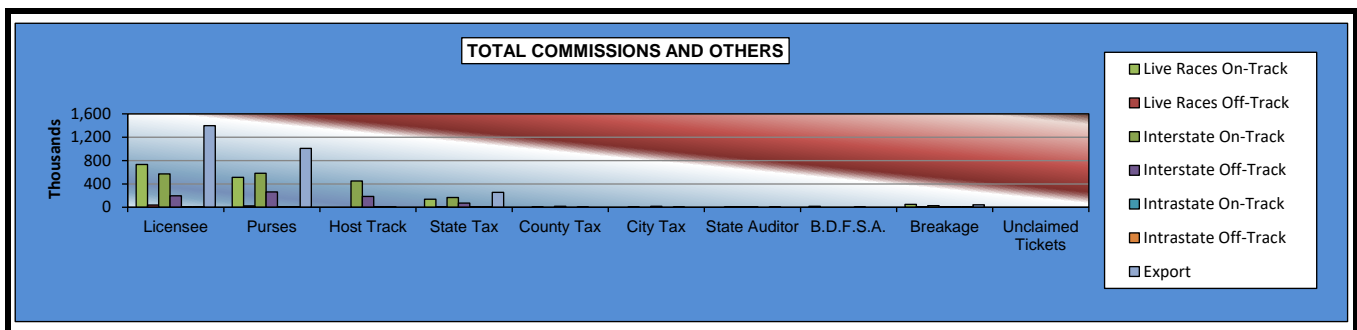
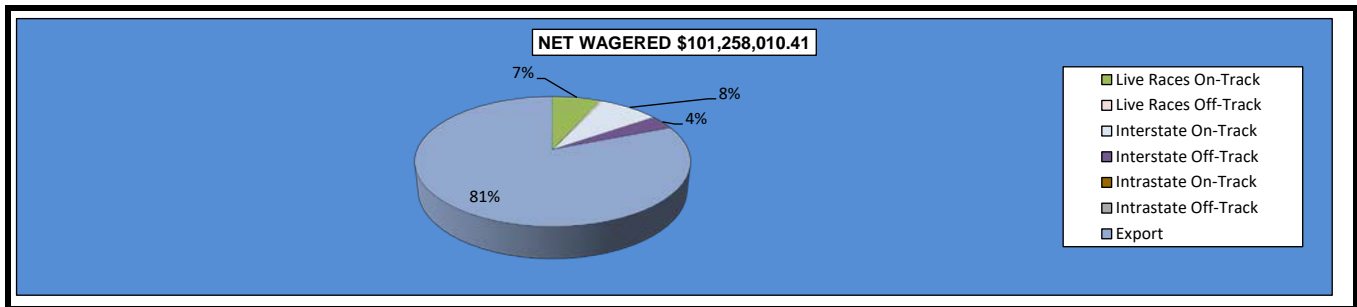


TOTAL COMMISSIONS AND OTHERS



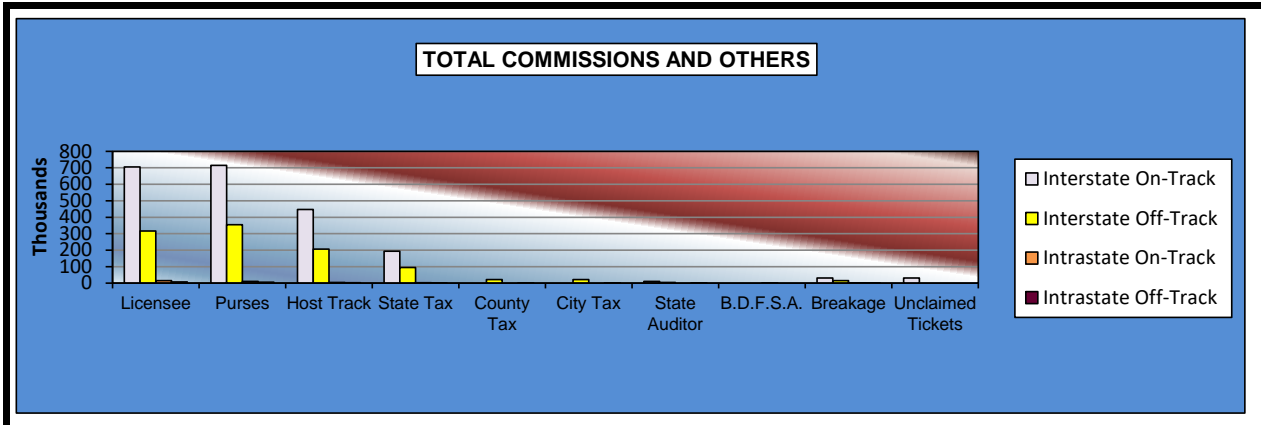
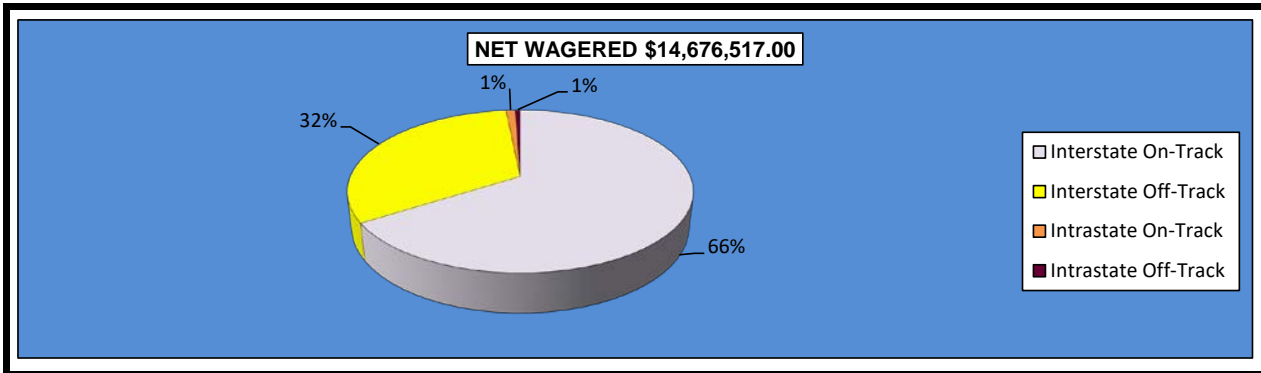
**OKLAHOMA HORSE RACING COMMISSION
STATISTICAL REPORT OF OPERATIONS
REMINGTON PARK-LIVE RACE DAYS AND SIMULCAST DAYS
DISTRIBUTION SUMMARY OF NET WAGERED-LIVE DAYS
JANUARY 1, 2017 THROUGH DECEMBER 31, 2017**

	Live Days							
	Live		Interstate Import		Intrastate Import		Export	Grand Total
	On-Track	OTW	On-Track	OTW	On-Track	OTW		
NET WAGERED	\$6,841,660.20	\$334,094.20	\$8,409,611.50	\$3,547,058.00	\$38,126.10	\$15,599.80	\$82,071,860.61	\$101,258,010.41
COMMISSIONS:								
Licensee	733,636.02	39,798.00	572,404.09	198,077.55	3,592.57	1,260.10	1,397,883.53	\$2,946,651.86
Purses	513,654.91	24,799.28	580,813.78	263,942.04	2,686.26	1,166.47	1,007,748.44	\$2,394,811.18
Host Track	0.00	0.00	449,973.13	185,539.42	1,143.83	467.98	0.00	\$637,124.36
State Tax	136,833.23	6,681.88	168,192.21	70,941.21	762.51	311.99	253,880.63	\$637,603.66
County Tax (See Note 4)	0.00	1,503.43	0.00	15,961.76	0.00	70.20	0.00	\$17,535.39
City Tax (See Note 4)	0.00	1,503.43	0.00	15,961.76	0.00	70.20	0.00	\$17,535.39
State Auditor	0.00	334.09	8,409.61	3,547.05	0.00	15.60	0.00	\$12,306.35
Breeding Development Fund Special Account (B.D.F.S.A.)	17,895.11	0.00	0.00	0.00	120.33	0.00	40,489.59	\$58,505.03
OTHERS:								
Breakage	48,294.95	1,086.45	28,548.34	10,769.67	123.27	53.07	0.00	\$88,875.75
Outstanding Tickets	0.00	0.00	0.00	0.00	0.00	0.00	0.00	\$0.00
TOTAL COMMISSIONS AND OTHERS:	\$1,450,314.22	\$75,706.56	\$1,808,341.16	\$764,740.46	\$8,428.77	\$3,415.61	\$2,700,002.19	\$6,810,948.97
NET PAID TO THE PUBLIC	\$5,391,345.98	\$258,387.64	\$6,601,270.34	\$2,782,317.54	\$29,697.33	\$12,184.19	\$79,371,858.42	\$94,447,061.44



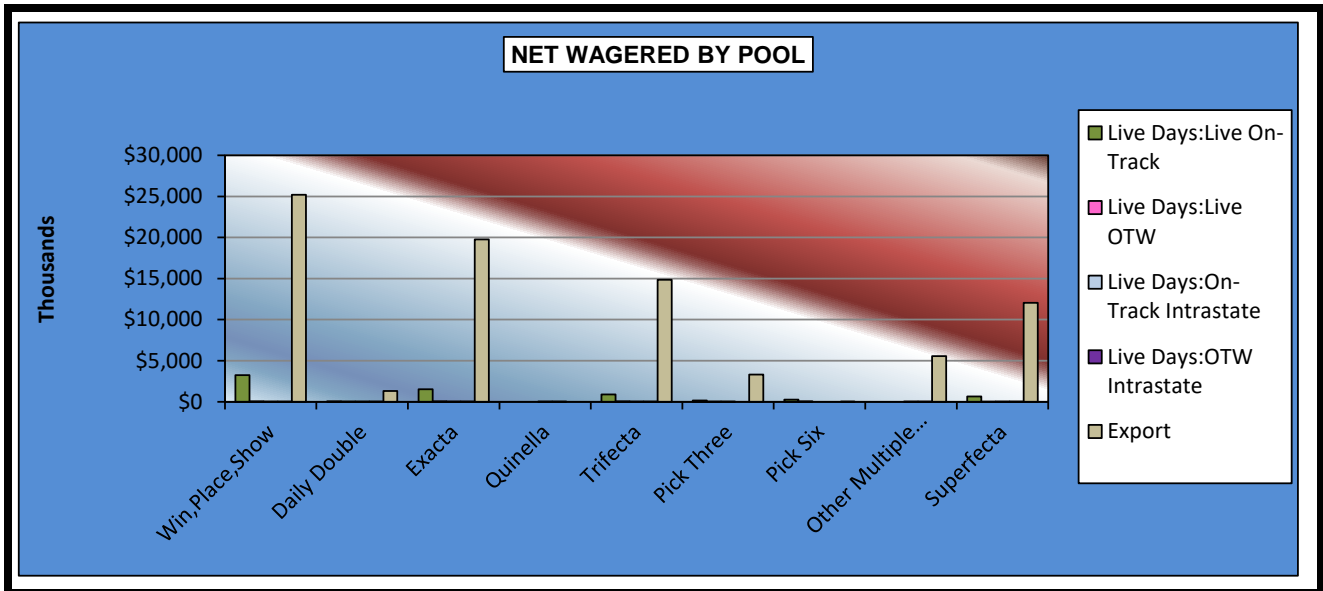
**OKLAHOMA HORSE RACING COMMISSION
STATISTICAL REPORT OF OPERATIONS
REMINGTON PARK-LIVE RACE DAYS AND SIMULCAST DAYS
DISTRIBUTION SUMMARY OF NET WAGERED-SIMULCAST DAYS
JANUARY 1, 2017 THROUGH DECEMBER 31, 2017**

	Simulcast Days				Grand Total
	Interstate Import		Intrastate Import		
	On-Track	OTW	On-Track	OTW	
NET WAGERED	\$9,688,655.90	\$4,753,891.10	\$152,505.60	\$81,464.40	\$14,676,517.00
COMMISSIONS:					
Licensee	704,651.13	316,907.93	14,487.28	6,894.53	\$1,042,940.87
Purses	715,083.88	354,330.78	10,863.07	6,102.31	\$1,086,380.04
Host Track	446,808.38	207,207.51	4,575.20	2,443.96	\$661,035.05
State Tax	193,541.55	95,309.13	3,050.09	1,629.29	\$293,530.06
County Tax (See Note 4)	0.00	21,392.51	0.00	366.60	\$21,759.11
City Tax (See Note 4)	0.00	21,392.51	0.00	366.60	\$21,759.11
State Auditor	9,688.66	4,753.88	0.00	81.46	\$14,524.00
Breeding Development Fund Special Account (B.D.F.S.A.)	0.00	0.00	459.25	0.00	\$459.25
OTHERS:					
Breakage	30,604.34	14,469.16	519.71	340.65	\$45,933.86
Outstanding Tickets	31,834.14	0.00	0.00	0.00	\$31,834.14
TOTAL COMMISSIONS AND OTHERS:	\$2,132,212.08	\$1,035,763.41	\$33,954.60	\$18,225.40	\$3,220,155.49
NET PAID TO THE PUBLIC	\$7,556,443.82	\$3,718,127.69	\$118,551.00	\$63,239.00	\$11,456,361.51



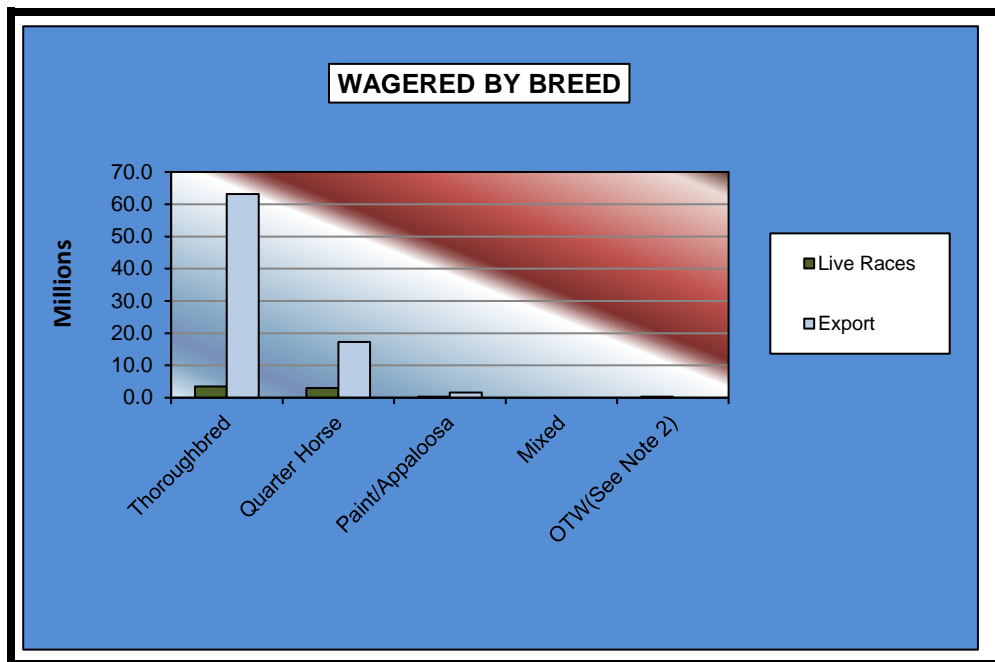
OKLAHOMA HORSE RACING COMMISSION
STATISTICAL REPORT OF OPERATIONS
REMINGTON PARK-LIVE RACE DAYS AND SIMULCAST DAYS
NET WAGERED BY POOL
JANUARY 1, 2017 THROUGH DECEMBER 31, 2017

	Live Days					Grand Total
	Live Races		Intrastate Import		Export	
	On-Track	OTW	On-Track	OTW		
	On-Track	OTW	On-Track	OTW	Export	
Win,Place,Show	\$3,262,638.00	\$67,357.00	\$8,183.00	\$4,257.00	\$25,197,451.02	\$28,539,886.02
Daily Double	71,023.00	5,409.00	272.00	31.00	1,316,200.14	\$1,392,935.14
Exacta	1,546,281.00	72,154.00	10,866.00	4,145.00	19,749,075.71	\$21,382,521.71
Quinella	0.00	0.00	526.00	141.00	0.00	\$667.00
Trifecta	885,210.00	71,539.50	8,378.50	4,745.50	14,871,778.98	\$15,841,652.48
Pick Three	150,665.00	19,495.00	150.50	4.00	3,320,221.43	\$3,490,535.93
Pick Six	268,601.90	61,633.40	0.00	0.00	2,119.50	\$332,354.80
Other Multiple Picks	0.00	0.00	220.50	363.00	5,566,043.59	\$5,566,627.09
Superfecta	657,241.30	36,506.30	9,529.60	1,913.30	12,048,970.24	\$12,754,160.74
NET WAGERED	\$6,841,660.20	\$334,094.20	\$38,126.10	\$15,599.80	\$82,071,860.61	\$89,301,340.91



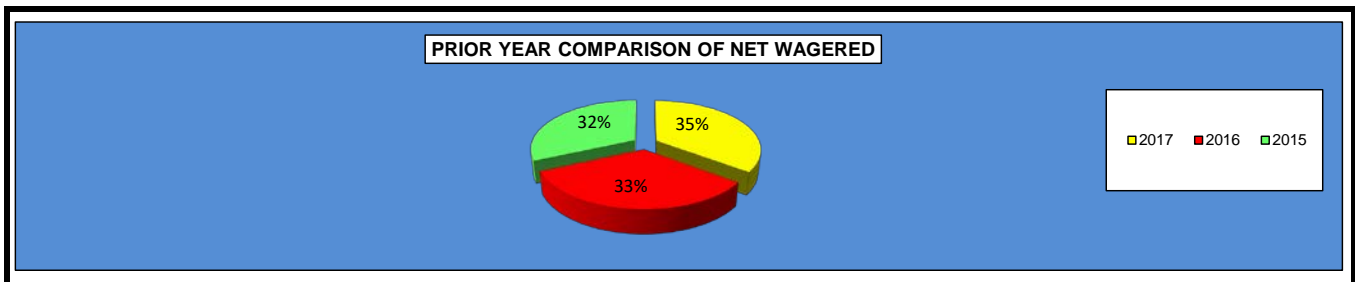
**OKLAHOMA HORSE RACING COMMISSION
STATISTICAL REPORT OF OPERATIONS
REMINGTON PARK-LIVE RACE DAYS AND SIMULCAST DAYS
NET WAGERED BY BREED
JANUARY 1, 2017 THROUGH DECEMBER 31, 2017**

	Live Days		Grand Total
	Live Races	Export	
Thoroughbred	\$3,454,413.70	\$63,189,139.42	\$66,643,553.12
Quarter Horse	3,042,510.00	17,268,242.24	\$20,310,752.24
Paint/Appaloosa	344,736.50	1,614,478.95	\$1,959,215.45
Mixed	0.00	0.00	\$0.00
OTW(See Note 2)	334,094.20	0.00	\$334,094.20
Net Wagered	\$7,175,754.40	\$82,071,860.61	\$89,247,615.01



**OKLAHOMA HORSE RACING COMMISSION
STATISTICAL REPORT OF OPERATIONS
REMINGTON PARK-LIVE RACE DAYS AND SIMULCAST DAYS
PRIOR YEAR COMPARISON - DISTRIBUTION SUMMARY OF NET WAGERED
JANUARY 1, 2017 THROUGH DECEMBER 31, 2017**

	2017 (See Note 1)	2016 (See Note 1)	2015 (See Note 1)	2016 to 2017 Increase (Decrease)	% Increase (Decrease)	2015 to 2016 Increase (Decrease)	% Increase (Decrease)
NET WAGERED	\$115,934,527.41	\$108,483,986.75	\$104,354,669.21	\$7,450,540.66	6.87%	\$4,129,317.54	3.96%
COMMISSIONS:							
Licensee	3,989,592.73	4,013,887.37	4,336,475.28	(24,294.64)	-0.61%	(322,587.91)	-7.44%
Purses	3,481,191.22	3,587,870.72	3,803,509.21	(106,679.50)	-2.97%	(215,638.49)	-5.67%
Host Track	1,298,159.41	1,460,405.44	1,494,517.24	(162,246.03)	-11.11%	(34,111.80)	-2.28%
State Tax	931,133.72	968,178.87	1,027,187.80	(37,045.15)	-3.83%	(59,008.93)	-5.74%
County Tax (See Note 4)	39,294.50	48,374.52	61,570.14	(9,080.02)	-18.77%	(13,195.62)	-21.43%
City Tax (See Note 4)	39,294.50	48,374.52	61,570.14	(9,080.02)	-18.77%	(13,195.62)	-21.43%
State Auditor	26,830.35	30,344.06	32,008.42	(3,513.71)	-11.58%	(1,664.36)	-5.20%
Breeding Development Fund							
Special Account	58,964.28	53,172.54	58,072.64	5,791.74	10.89%	(4,900.10)	-8.44%
OTHERS:							
Breakage	134,809.61	163,016.60	168,966.79	(28,206.99)	-17.30%	(5,950.19)	-3.52%
Outstanding Tickets	31,834.14	43,027.62	28,071.77	(11,193.48)	-26.01%	14,955.85	53.28%
TOTAL COMMISSIONS AND OTHERS	\$10,031,104.46	\$10,416,652.26	\$11,071,949.43	(\$385,547.80)	-3.70%	(\$655,297.17)	-5.92%



OKLAHOMA HORSE RACING COMMISSION
STATISTICAL REPORT OF OPERATIONS
REMINGTON PARK-LIVE RACE DAYS AND SIMULCAST DAYS
PRIOR YEAR COMPARISON - DISTRIBUTION SUMMARY OF NET WAGERED
JANUARY 1, 2017 THROUGH DECEMBER 31, 2017

	2017 (See Note 1)	2016 (See Note 1)	2015 (See Note 1)	2016 to 2017 Increase (Decrease)	% Increase (Decrease)	2015 to 2016 Increase (Decrease)	% Increase (Decrease)
NET WAGERED	\$115,934,527.41	\$108,483,986.75	\$104,354,669.21	\$7,450,540.66	6.87%	\$4,129,317.54	3.96%
Number of Race Days	365	365	365	0	0.00%	0	0.00%
Number of Live Days	117	117	118	0	0.00%	(1)	-0.85%
Average Daily Handle	\$317,628.84	\$297,216.40	\$285,903.20	\$20,412.44	6.87%	\$11,313.20	3.96%
LIVE RACES							
Average Wagered Per Race:							
Thoroughbred	\$110,337.01	\$131,334.54	\$84,536.66	(\$20,997.53)	-15.99%	\$46,797.88	55.36%
Quarter Horse	\$41,535.28	\$38,788.69	\$33,186.91	\$2,746.59	7.08%	\$5,601.78	16.88%
Paint/Appaloosa	\$25,779.15	\$23,023.18	\$27,603.69	\$2,755.97	11.97%	(\$4,580.51)	-16.59%
Mixed	\$0.00	\$0.00	\$0.00	\$0.00	0.00%	\$0.00	0.00%
OTW	\$274.07	\$378.83	\$481.55	(\$104.76)	-27.65%	(\$102.72)	-21.33%
Average Races Per Day:							
Thoroughbred	9.16	6.49	8.79	2.67	41.14%	(2.30)	-26.17%
Quarter Horse	9.78	9.88	9.76	(0.10)	-1.01%	0.12	1.23%
Paint/Appaloosa	1.52	1.44	1.45	0.08	5.56%	(0.01)	-0.69%
Mixed	0.00	0.00	0.00	0.00	0.00%	0.00	0.00%
OTW	10.00	8.90	10.00	1.10	12.36%	(1.10)	-11.00%

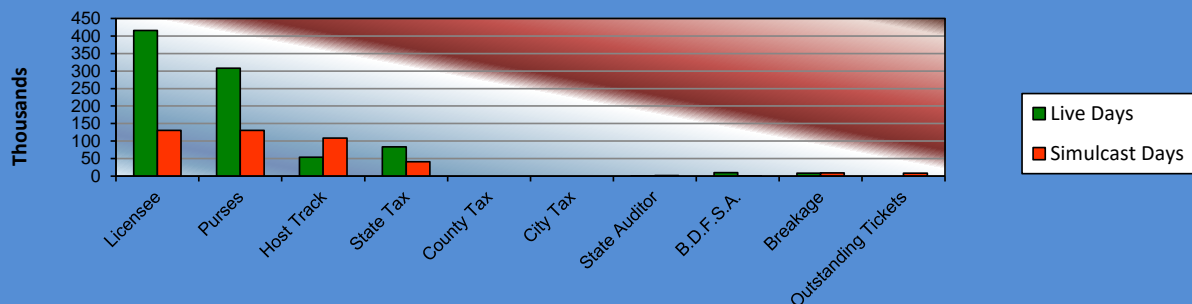
**OKLAHOMA HORSE RACING COMMISSION
STATISTICAL REPORT OF OPERATIONS
WILL ROGERS DOWNS-LIVE RACE DAYS AND SIMULCAST DAYS
DISTRIBUTION SUMMARY OF NET WAGERED
JANUARY 1, 2017 THROUGH DECEMBER 31, 2017**

	Live Days	Exports (see Note 1)	Total	Simulcast Days	Grand Total
NET WAGERED	\$1,385,483.50	\$19,532,286.20	\$20,917,769.70	\$2,053,497.00	\$22,971,266.70
COMMISSIONS:					
Licensee	107,272.42	308,232.75	\$415,505.17	130,653.19	\$546,158.36
Purses	87,229.38	220,846.20	\$308,075.58	130,472.93	\$438,548.51
Host Track	54,284.16	0.00	\$54,284.16	108,863.51	\$163,147.67
State Tax	27,709.68	55,952.45	\$83,662.13	41,072.35	\$124,734.48
County Tax (See Note 4)	0.00	0.00	\$0.00	0.00	\$0.00
City Tax (See Note 4)	0.00	0.00	\$0.00	0.00	\$0.00
State Auditor	745.96	0.00	\$745.96	1,967.73	\$2,713.69
Breeding Development Fund Special Account (B.D.F.S.A.)	1,536.75	8,810.21	\$10,346.96	233.85	\$10,580.81
OTHERS:					
Breakage	8,436.55	0.00	\$8,436.55	9,520.96	\$17,957.51
Outstanding Tickets (See Note 3)	0.00	0.00	\$0.00	8,777.41	\$8,777.41
TOTAL COMMISSIONS AND OTHERS:	\$287,214.90	\$593,841.61	\$881,056.51	\$431,561.93	\$1,312,618.44
NET PAID TO THE PUBLIC	\$1,098,268.60	\$18,938,444.59	\$20,036,713.19	\$1,621,935.07	\$21,658,648.26

NET WAGERED \$22,971,266.70

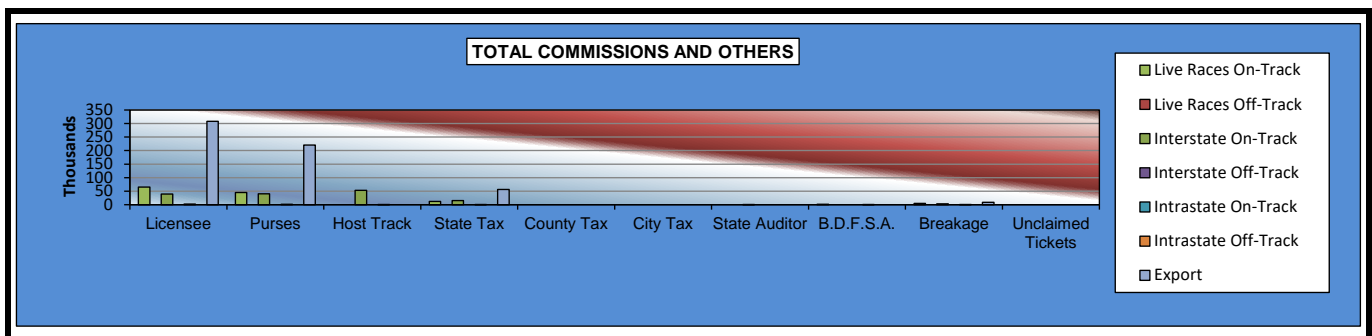
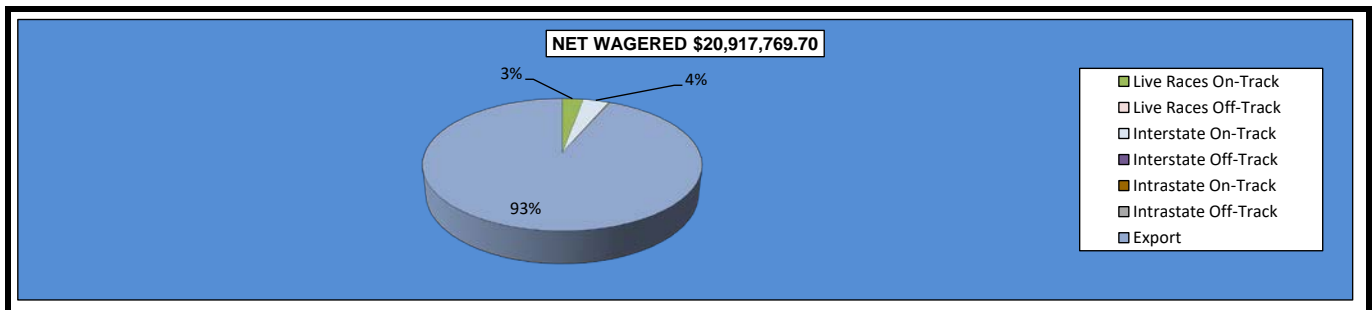


TOTAL COMMISSIONS AND OTHERS



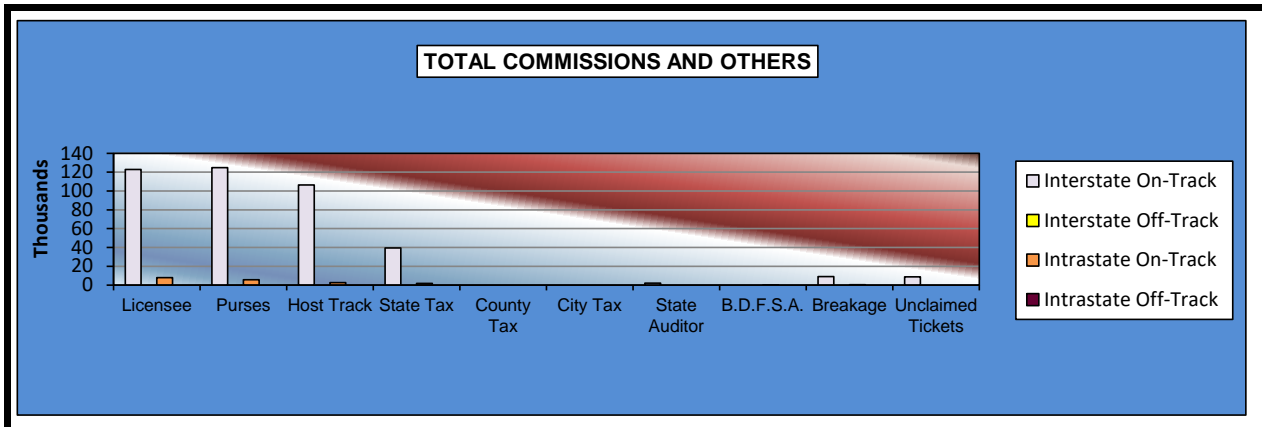
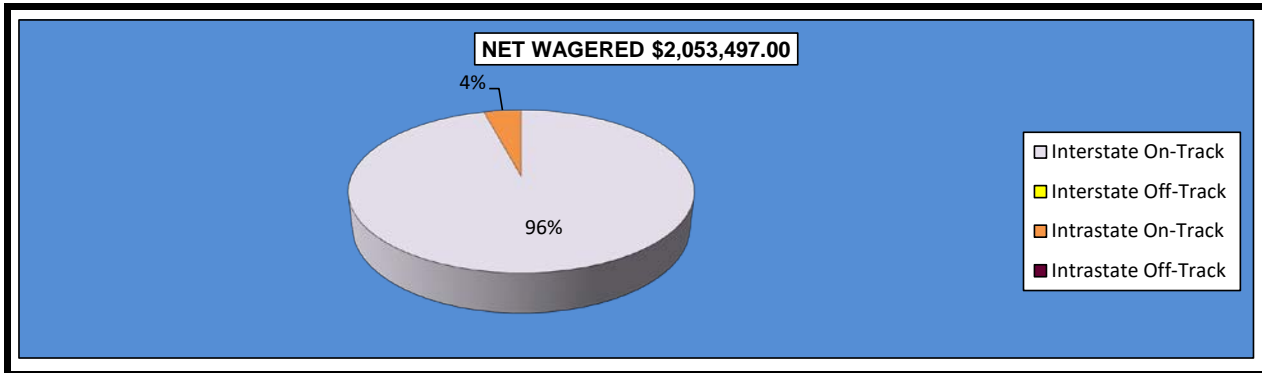
**OKLAHOMA HORSE RACING COMMISSION
STATISTICAL REPORT OF OPERATIONS
WILL ROGERS DOWNS-LIVE RACE DAYS AND SIMULCAST DAYS
DISTRIBUTION SUMMARY OF NET WAGERED-LIVE DAYS
JANUARY 1, 2017 THROUGH DECEMBER 31, 2017**

	Live Days							
	Live		Interstate Import		Intrastate Import		Export	Grand Total
	On-Track	OTW	On-Track	OTW	On-Track	OTW		
NET WAGERED	\$611,650.00	\$0.00	\$745,959.70	\$0.00	\$27,873.80	\$0.00	\$19,532,286.20	\$20,917,769.70
COMMISSIONS:								
Licensee	64,899.10	0.00	39,792.81	0.00	2,580.51	0.00	308,232.75	\$415,505.17
Purses	44,813.69	0.00	40,538.76	0.00	1,876.93	0.00	220,846.20	\$308,075.58
Host Track	0.00	0.00	53,447.92	0.00	836.24	0.00	0.00	\$54,284.16
State Tax	12,233.01	0.00	14,919.21	0.00	557.46	0.00	55,952.45	\$83,662.13
County Tax (See Note 4)	0.00	0.00	0.00	0.00	0.00	0.00	0.00	\$0.00
City Tax (See Note 4)	0.00	0.00	0.00	0.00	0.00	0.00	0.00	\$0.00
State Auditor	0.00	0.00	745.96	0.00	0.00	0.00	0.00	\$745.96
Breeding Development Fund								
Special Account (B.D.F.S.A.)	1,460.19	0.00	0.00	0.00	76.56	0.00	8,810.21	\$10,346.96
OTHERS:								
Breakage	4,908.61	0.00	3,359.82	0.00	168.12	0.00	0.00	\$8,436.55
Outstanding Tickets	0.00	0.00	0.00	0.00	0.00	0.00	0.00	\$0.00
TOTAL COMMISSIONS AND OTHERS:	\$128,314.60	\$0.00	\$152,804.48	\$0.00	\$6,095.82	\$0.00	\$593,841.61	\$881,056.51
NET PAID TO THE PUBLIC	\$483,335.40	\$0.00	\$593,155.22	\$0.00	\$21,777.98	\$0.00	\$18,938,444.59	\$20,036,713.19



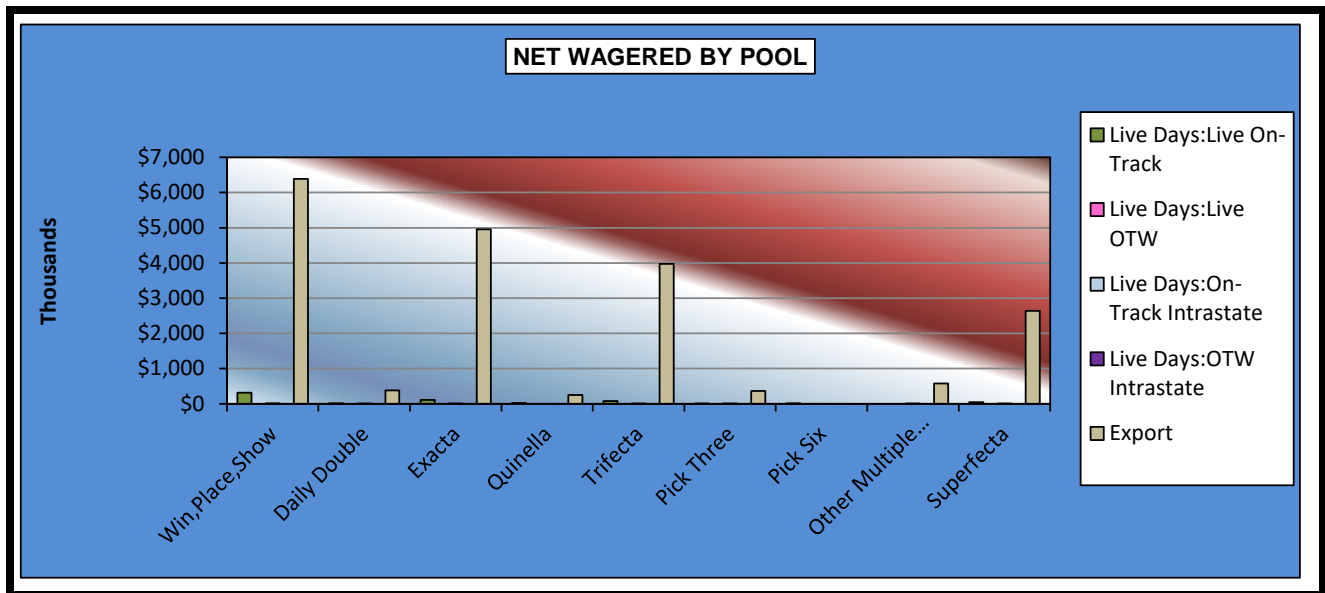
OKLAHOMA HORSE RACING COMMISSION
STATISTICAL REPORT OF OPERATIONS
WILL ROGERS DOWNS-LIVE RACE DAYS AND SIMULCAST DAYS
DISTRIBUTION SUMMARY OF NET WAGERED-SIMULCAST DAYS
JANUARY 1, 2017 THROUGH DECEMBER 31, 2017

	Simulcast Days				Grand Total
	Interstate Import		Intrastate Import		
	On-Track	OTW	On-Track	OTW	
NET WAGERED	\$1,967,726.40	\$0.00	\$85,770.60	\$0.00	\$2,053,497.00
COMMISSIONS:					
Licensee	122,802.41	0.00	7,850.78	0.00	\$130,653.19
Purses	124,770.23	0.00	5,702.70	0.00	\$130,472.93
Host Track	106,304.69	0.00	2,558.82	0.00	\$108,863.51
State Tax	39,356.94	0.00	1,715.41	0.00	\$41,072.35
County Tax (See Note 4)	0.00	0.00	0.00	0.00	\$0.00
City Tax (See Note 4)	0.00	0.00	0.00	0.00	\$0.00
State Auditor	1,967.73	0.00	0.00	0.00	\$1,967.73
Breeding Development Fund					
Special Account (B.D.F.S.A.)	0.00	0.00	233.85	0.00	\$233.85
OTHERS:					
Breakage	9,067.73	0.00	453.23	0.00	\$9,520.96
Outstanding Tickets	8,777.41	0.00	0.00	0.00	\$8,777.41
TOTAL COMMISSIONS AND OTHERS:	\$413,047.14	\$0.00	\$18,514.79	\$0.00	\$431,561.93
NET PAID TO THE PUBLIC	\$1,554,679.26	\$0.00	\$67,255.81	\$0.00	\$1,621,935.07



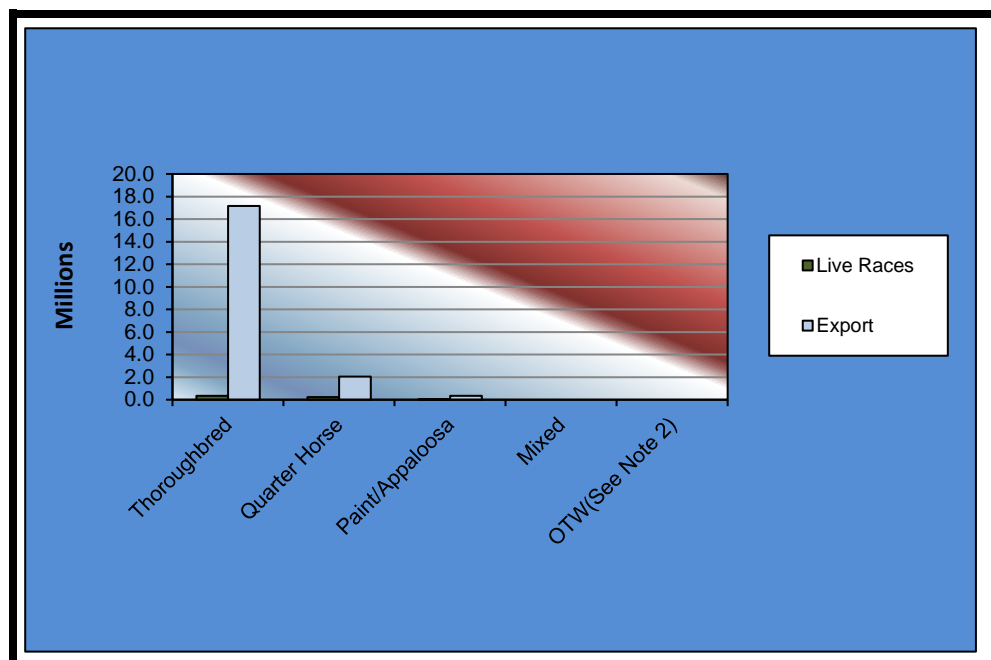
OKLAHOMA HORSE RACING COMMISSION
STATISTICAL REPORT OF OPERATIONS
WILL ROGERS DOWNS-LIVE RACE DAYS AND SIMULCAST DAYS
NET WAGERED BY POOL
JANUARY 1, 2017 THROUGH DECEMBER 31, 2017

	Live Days					Grand Total
	Live Races		Intrastate Import		Export	
	On-Track	OTW	On-Track	OTW		
Win,Place,Show	\$319,616.00	\$0.00	\$9,860.00	\$0.00	\$6,385,589.54	\$6,715,065.54
Daily Double	10,973.00	0.00	524.00	0.00	385,445.90	\$396,942.90
Exacta	113,219.00	0.00	5,426.00	0.00	4,956,358.09	\$5,075,003.09
Quinella	22,805.00	0.00	0.00	0.00	249,598.56	\$272,403.56
Trifecta	81,456.50	0.00	4,834.00	0.00	3,973,531.31	\$4,059,821.81
Pick Three	7,079.00	0.00	1,133.00	0.00	363,436.06	\$371,648.06
Pick Six	12,596.50	0.00	0.00	0.00	0.00	\$12,596.50
Other Multiple Picks	0.00	0.00	2,583.00	0.00	576,999.22	\$579,582.22
Superfecta	43,905.00	0.00	3,513.80	0.00	2,641,327.52	\$2,688,746.32
NET WAGERED	\$611,650.00	\$0.00	\$27,873.80	\$0.00	\$19,532,286.20	\$20,171,810.00



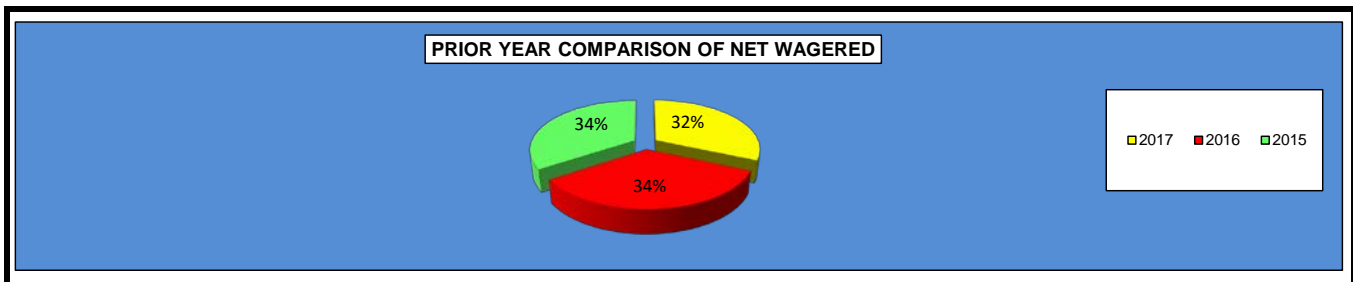
**OKLAHOMA HORSE RACING COMMISSION
STATISTICAL REPORT OF OPERATIONS
WILL ROGERS DOWNS-LIVE RACE DAYS AND SIMULCAST DAYS
NET WAGERED BY BREED
JANUARY 1, 2017 THROUGH DECEMBER 31, 2017**

	Live Days		Grand Total
	Live Races	Export	
Thoroughbred	\$337,827.70	\$17,150,897.17	\$17,488,724.87
Quarter Horse	236,573.30	2,043,890.21	\$2,280,463.51
Paint/Appaloosa	37,249.00	337,498.82	\$374,747.82
Mixed	0.00	0.00	\$0.00
OTW(See Note 2)	0.00	0.00	\$0.00
Net Wagered	\$611,650.00	\$19,532,286.20	\$20,143,936.20



**OKLAHOMA HORSE RACING COMMISSION
STATISTICAL REPORT OF OPERATIONS
WILL ROGERS DOWNS-LIVE RACE DAYS AND SIMULCAST DAYS
PRIOR YEAR COMPARISON - DISTRIBUTION SUMMARY OF NET WAGERED
JANUARY 1, 2017 THROUGH DECEMBER 31, 2017**

	2017 (See Note 1)	2016 (See Note 1)	2015 (See Note 1)	2016 to 2017 Increase (Decrease)	% Increase (Decrease)	2015 to 2016 Increase (Decrease)	% Increase (Decrease)
NET WAGERED	\$22,971,266.70	\$24,708,248.84	\$24,977,508.81	(\$1,736,982.14)	-7.03%	(\$269,259.97)	-1.08%
COMMISSIONS:							
Licensee	546,158.36	585,621.24	595,349.15	(39,462.88)	-6.74%	(9,727.91)	-1.63%
Purses	438,548.51	470,229.89	476,678.84	(31,681.38)	-6.74%	(6,448.95)	-1.35%
Host Track	163,147.67	156,386.71	146,433.59	6,760.96	4.32%	9,953.12	6.80%
State Tax	124,734.48	130,979.86	129,432.73	(6,245.38)	-4.77%	1,547.13	1.20%
County Tax (See Note 4)	0.00	0.00	0.00	0.00	0.00%	0.00	0.00%
City Tax (See Note 4)	0.00	0.00	0.00	0.00	0.00%	0.00	0.00%
State Auditor	2,713.69	2,727.48	2,573.33	(13.79)	-0.51%	154.15	5.99%
Breeding Development Fund							
Special Account	10,580.81	11,907.64	12,329.75	(1,326.83)	-11.14%	(422.11)	-3.42%
OTHERS:							
Breakage	17,957.51	19,809.00	19,284.25	(1,851.49)	-9.35%	524.75	2.72%
Outstanding Tickets	8,777.41	9,126.29	10,207.39	(348.88)	-3.82%	(1,081.10)	-10.59%
TOTAL COMMISSIONS AND OTHERS	\$1,312,618.44	\$1,386,788.11	\$1,392,289.03	(\$74,169.67)	-5.35%	(\$5,500.92)	-0.40%



OKLAHOMA HORSE RACING COMMISSION
STATISTICAL REPORT OF OPERATIONS
WILL ROGERS DOWNS-LIVE RACE DAYS AND SIMULCAST DAYS
PRIOR YEAR COMPARISON - DISTRIBUTION SUMMARY OF NET WAGERED
JANUARY 1, 2017 THROUGH DECEMBER 31, 2017

	2017 (See Note 1)	2016 (See Note 1)	2015 (See Note 1)	2016 to 2017 Increase (Decrease)	% Increase (Decrease)	2015 to 2016 Increase (Decrease)	% Increase (Decrease)
NET WAGERED	\$22,971,266.70	\$24,708,248.84	\$24,977,508.81	(\$1,736,982.14)	-7.03%	(\$269,259.97)	-1.08%
Number of Race Days	365	365	365	0	0.00%	0	0.00%
Number of Live Days	57	58	57	(1)	-1.72%	1	1.75%
Average Daily Handle	\$62,934.98	\$67,693.83	\$68,431.53	(\$4,758.85)	-7.03%	(\$737.70)	-1.08%
LIVE RACES							
Average Wagered Per Race:							
Thoroughbred	\$63,364.95	\$68,086.38	\$70,991.11	(\$4,721.43)	-6.93%	(\$2,904.73)	-4.09%
Quarter Horse	\$8,509.19	\$8,627.91	\$10,273.36	(\$118.72)	-1.38%	(\$1,645.45)	-16.02%
Paint/Appaloosa	\$6,351.66	\$6,500.14	\$4,623.46	(\$148.48)	-2.28%	\$1,876.68	40.59%
Mixed	\$0.00	\$0.00	\$0.00	\$0.00	0.00%	\$0.00	0.00%
OTW	\$0.00	\$0.00	\$0.00	\$0.00	0.00%	\$0.00	0.00%
Average Races Per Day:							
Thoroughbred	9.52	9.37	9.38	0.15	1.60%	(0.01)	-0.11%
Quarter Horse	9.57	9.71	9.14	(0.14)	-1.44%	0.57	6.24%
Paint/Appaloosa	2.03	2.11	2.85	(0.08)	-3.79%	(0.74)	-25.96%
Mixed	0.00	0.00	0.00	0.00	0.00%	0.00	0.00%
OTW	0.00	0.00	0.00	0.00	0.00%	0.00	0.00%

ENDNOTES

NOTE 1

Handle for guest facilities are not considered a part of the total net wagered. Intrastate guest commissions are also reported as a Host payment from another in-state racing facility.

NOTE 2

Wagers and number of races placed at OTW sites are not available by breed at this time.

NOTE 3

Unclaimed tickets are reported in this report, as of 12/31/2017, for all tracks.

NOTE 4

City and County tax amounts represent both live and simulcast races.

NOTE 5

Race day number, net wagered and attendance is totals of on-track and OTW amounts. Therefore, care must be taken when interpreting and analyzing averages.

APPENDIX

(TERMS, HEADINGS, AND TITLES)

APPALOOSA HORSE RACING The form of horse racing in which each participating horse is an Appaloosa registered with the Appaloosa Horse Club or any successor organization and mounted by a Jockey.

ARABIAN HORSE RACING The form of horse racing in which each participating horse is an Arabian registered with the Arabian Horse Club Registry of America and approved by the Arabian Horse Racing Association of America or any successor organization, mounted by a Jockey, and engaged in races on the flat over a distance of not less than one-quarter (1/4) mile or more than four (4) miles.

ATTENDANCE Number of people at licensed Oklahoma wagering sites as reported by individual associations or fairs.

BREEDING DEVELOPMENT FUND SPECIAL ACCOUNT (B.D.F.S.A.) All monies received by the Commission for deposit in the fund as revenue received from commissions on exotic wagering as determined by Oklahoma Statutes.

BREAKAGE The odd cents by which the amount payable on each dollar wagered exceeds a multiple of ten cents.

COMMISSIONS Takeout or monies withheld from pari-mutuel wagering as prescribed by Oklahoma Statutes.

EXOTIC POOLS Means the total wagers under the pari-mutuel system on the finishing position of two or more horses on one race or on the finishing position on one or more horses for two or more races.

GUEST FACILITY An association authorized by the Commission to offer, sell, cash, redeem, or exchange pari-mutuel tickets on races being run at a host association.

HOST TRACK An association conducting a licensed pari-mutuel meeting from which authorized contests or entire performances are simulcast.

INTERSTATE Refers to between states, i.e. Wagering conducted by a betting system outside the State of Oklahoma on the results of one or more races running at an Oklahoma host association.

APPENDIX

(TERMS, HEADINGS, AND TITLES)

INTRASTATE Refers to within the State, i.e. the exchange of live racing programs between any Oklahoma racing associations for the purpose of wagering.

LICENSEE A pari-mutuel organization granted a license by the Oklahoma Horse Racing Commission to conduct pari-mutuel racing.

LOCAL TAX (CITY/COUNTY) Additional takeout designated for distribution to local municipalities. Local municipalities receive a distribution of total monies wagered at an off-track wagering facility as designated by law.

NET PAID TO PUBLIC Winnings from pari-mutuel wagers returned to the public.

NET WAGERED The Net Wagered column includes all common pool wagering accepted by Oklahoma organizational licenses on live and simulcast races.

OFF-TRACK WAGERING (OTW) Any organization licensee shall file with the Oklahoma Horse Racing Commission its plan to conduct pari-mutuel wagering at a facility or facilities located outside the organization licensee's racing enclosure.

OKLAHOMA BRED PROGRAM An accredited Oklahoma-Bred horse shall mean an Arabian, Appaloosa, Quarter, Paint, Pinto, Thoroughbred, and any other breed not otherwise specified in the Act, and which meets certain requirements.

ON-TRACK Refers to activity at the host track facility.

PAINT HORSE RACING The form of horse racing in which each participating horse is a Paint horse registered with the American Paint Horse Association or any successor organization and mounted by a Jockey.

PARI-MUTUEL A form of wagering on the outcome of horse races whereby wagers are placed into wagering pools; win, place, show, or other pools designating the finishing position of two or more horses in a race or races. When the outcome of the race or races has been declared official, wagers comprising each pool are distributed as winnings less the amounts retained as takeout: licensee, purses, host, etc.

APPENDIX

(TERMS, HEADINGS, AND TITLES)

PARI-MUTUEL SYSTEM OF WAGERING A system of wagering on the outcome of horse races in which those who wager purchase tickets of various denominations on a horse or horses.

PARI-MUTUEL TAX Portion of the monies wagered retained by the State of Oklahoma from pari-mutuel wagering.

PER CAPITA Total wagers divided by total attendance.

PINTO HORSE RACING The form of horse racing in which each participating horse is a Pinto horse registered with the Pinto Horse Association of American, Inc., or any successor organization and mounted by a Jockey.

PURSES A portion of the takeout retained by horsemen from pari-mutuel wagering as determined by Oklahoma Statutes.

QUARTER HORSE RACING The form of horse racing in which each participating horse is a Quarter Horse registered with the American Quarter Horse Association or any successor organization, mounted by a Jockey, and engaged in a race on the flat.

RACE DAY Days during which horse races are conducted.

RACE MEETING The entire period of time not to exceed twenty (20) calendar days separating any race days for which an organization license has been granted to a group or person by the Commission to hold horse racing where a pari-mutuel system of wagering is conducted.

APPENDIX

(TERMS, HEADINGS, AND TITLES)

SIMULCAST Means audio-visual transmission of a race meeting to off-track betting systems for the purpose of accepting wagers on the results of horse racing events. It may include the transmission of pari-mutuel wagering odds, amounts wagered and the payoffs of such events and other horse racing programming relating to the racehorses or participants.

SIMULCAST DAYS Day when the organization licensee is not conducting live racing, the licensee may accept wagers on the results of not more than six out-of-state full racing programs.

STATE AUDITOR FEE The State Auditor and Inspector receives one-tenth of one percent (1/10th of 1%) of total monies wagered at the racing enclosure on out-of-state simulcast races as well as OTW facilities on all races.

THOROUGHBRED HORSE RACING The form of horse racing in which each participating horse is a Thoroughbred horse registered with The Jockey Club or any successor organization, mounted by a Jockey, and engaged in races on the flat.

UNCLAIMED TICKETS Ticket must be cashed within sixty (60) days after their purchase. Any unclaimed proceeds will be deposited into the Oklahoma Breeding Development Fund Special Account on a calendar quarterly basis.

WIN, PLACE, SHOW (WPS) The total wagers under the pari-mutuel system on any horse in a particular race to finish first, second, or third.



OFFICE OF THE STATE AUDITOR & INSPECTOR
2300 N. LINCOLN BOULEVARD, ROOM 100
OKLAHOMA CITY, OK 73105-4896

WWW.SAI.OK.GOV