

**STEPHENS COUNTY, OKLAHOMA
FINANCIAL STATEMENT
AND INDEPENDENT AUDITOR'S REPORT
FOR THE FISCAL YEAR ENDED JUNE 30, 2006**

This publication is printed and issued by the State Auditor and Inspector as authorized by 19 O.S. § 171. Pursuant to 74 O.S. § 3105, thirty-five (35) copies have been prepared and distributed at a cost of \$91.58. Copies have been deposited with the Publications Clearinghouse of the Oklahoma Department of Libraries.



STATE OF OKLAHOMA
OFFICE OF THE AUDITOR AND INSPECTOR

JEFF A. McMAHAN
State Auditor and Inspector

May 22, 2007

TO THE CITIZENS OF
STEPHENS COUNTY, OKLAHOMA

Transmitted herewith is the audit of Stephens County, Oklahoma, for the fiscal year ended June 30, 2006. A report of this type is critical in nature; however, we do not intend to imply that our audit failed to disclose commendable features in the present accounting and operating procedures of the County.

We wish to take this opportunity to express our appreciation for the assistance and cooperation extended to our office during the course of our audit.

The Office of the State Auditor and Inspector is committed to serving the public interest by providing independent oversight and by issuing reports that serve as a management tool to the state to ensure a government which is accountable to the people of the State of Oklahoma.

Sincerely,

A handwritten signature in black ink that reads "Jeff A. McMahan".

JEFF A. McMAHAN
State Auditor and Inspector

STEPHENS COUNTY, OKLAHOMA
FINANCIAL STATEMENT
FOR THE FISCAL YEAR ENDED JUNE 30, 2006

TABLE OF CONTENTS

INTRODUCTORY SECTION (Unaudited)

Report to the Citizens of Stephens County.....	ii
County Officials and Responsibilities	iii
Ad Valorem Tax Distribution.....	viii
Computation of Legal Debt Margin	ix
Ratio of Net General Bonded Debt to Assessed Value and Net Bonded Debt Per Capita	x
Assessed Value of Property.....	xi

FINANCIAL SECTION

Report of State Auditor and Inspector.....	1
Basic Financial Statement:	
Combined Statement of Receipts, Disbursements, and Changes in Cash Balances (with Combining Information).....	3
Notes to the Financial Statement	4

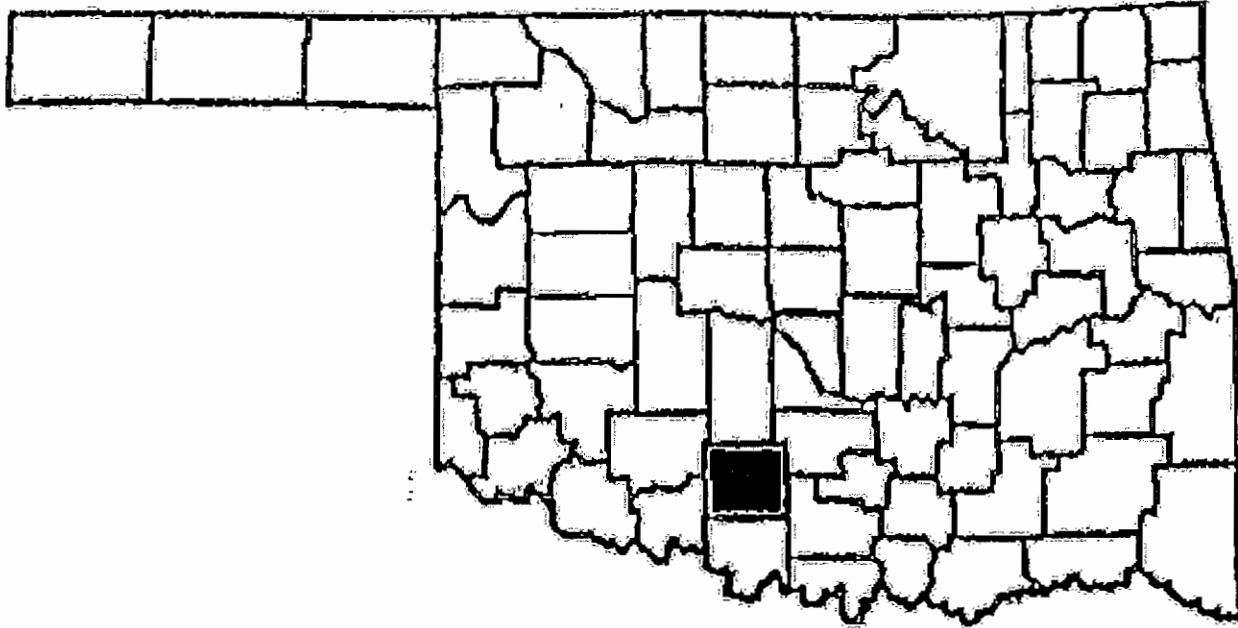
OTHER SUPPLEMENTARY INFORMATION

Comparative Schedule of Receipts, Expenditures, and Changes in Cash Balances—Budget and Actual—Budgetary Basis—General Fund	12
Detailed Schedule of Receipts, Disbursements, and Changes in Cash Balances—Sinking Fund	14
Notes to Other Supplementary Information.....	15

INTERNAL CONTROL AND COMPLIANCE SECTION

Report on Internal Control Over Financial Reporting and on Compliance and Other Matters Based on an Audit of Financial Statements Performed in Accordance With <i>Government Auditing Standards</i>	16
Schedule of Findings and Responses.....	18

REPORT TO THE CITIZENS
OF
STEPHENS COUNTY, OKLAHOMA



Created at statehood from portions of Comanche County, Oklahoma Territory, and the Chickasaw Nation, Stephens County was named for John H. Stephens, a member of Congress from Texas and staunch advocate of Oklahoma statehood. The first permanent settler, Silas Fitzpatrick, sold his store to William Duncan, for whom the county seat was named in 1892. Duncan Municipal Airport, OKT Railroad, and Oklahoma Transportation-Jefferson Bus Lines provide additional transportation links.

The economy is based on agriculture (wheat, peanuts, cotton, cattle) and petroleum. Duncan, Marlow, and Comanche are the principal municipalities and each offers a wide range of goods and services. Halliburton Oil Field Services began in Duncan, and remains a major employer in the area.

Duncan maintains 144 acres of parks and playgrounds and two public swimming pools. There are golf courses in Duncan, Marlow, and Comanche. Boating, fishing, camping facilities, and 4,000 acres of recreational lands are found at Clear Creek, Duncan, Humphreys, and Fuqua lakes.

County Seat – Duncan

Area – 891.12 Square Miles

County Population – 42,826
(2004 est.)

Farms – 1,359

Land in Farms – 419,923 Acres

Primary Source: Oklahoma Almanac 2005-2006

See independent auditor's report.

**STEPHENS COUNTY OFFICIALS
AND RESPONSIBILITIES
FOR THE FISCAL YEAR ENDED JUNE 30, 2006**

COUNTY ASSESSOR

Cathy Hokit
(D) Duncan

The County Assessor has the responsibility to appraise and assess the real and personal property within the county for the purpose of ad valorem taxation. Also, the County Assessor is required to compute the ad valorem taxes due on all taxable property. The County Assessor appraises all the taxable real and personal property according to its fair cash value for which the property is actually being used as of January 1 of the taxable year at the percentages provided for in Article 10, § 8 of the Oklahoma Constitution.

The County Assessor is required to build and maintain permanent records of the taxable real property and tax exempt real property within the county. Information entered on each record includes the property's legal description, owner's name and address, and the homestead exemption status of the owner.

COUNTY CLERK

Jo Johnson
(D) Duncan

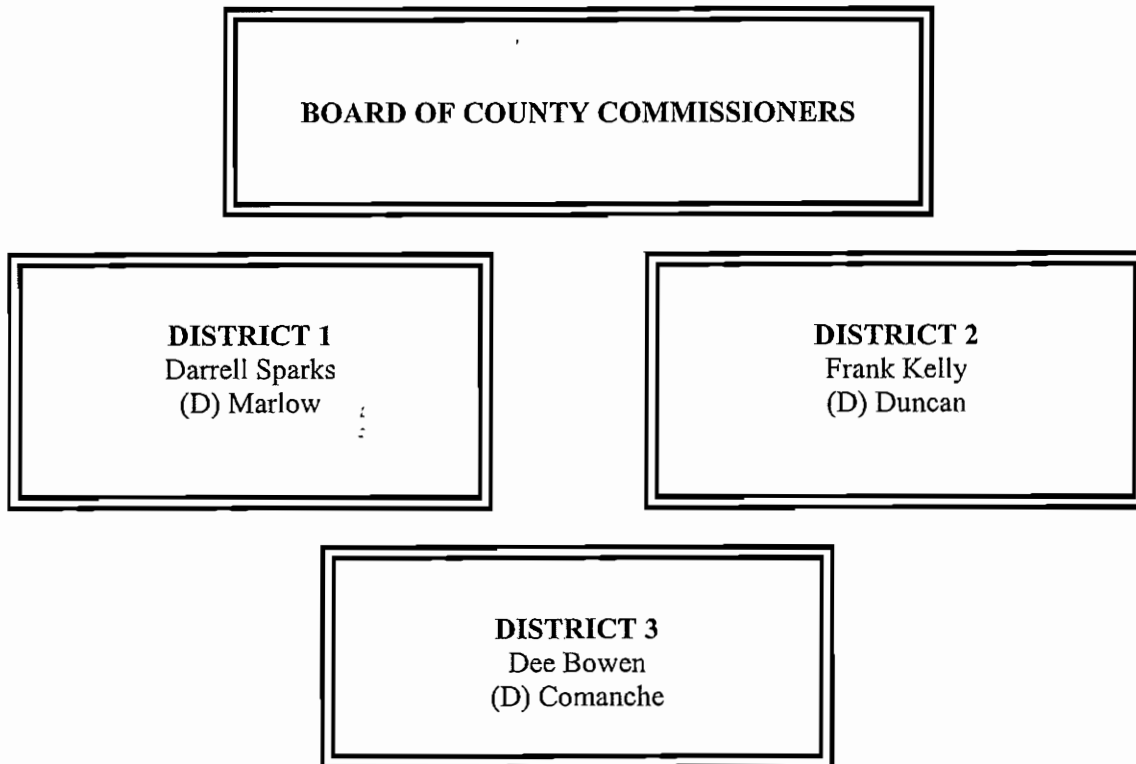
The County Clerk serves as the register of deeds and custodian of records for the county. The County Clerk also serves as the secretary to several boards, including the Board of County Commissioners, the County Excise Board, the County Board of Equalization, and the Board of Tax Roll Corrections.

The County Clerk reviews all the claims for payment of goods and services purchased or contracted by the county, and prepares the proper warrants for payment of those goods and services and the county payroll. The County Clerk, or his or her designated deputy, serves as the purchasing agent for the county. This system is a means to ensure the public that tax dollars are being spent appropriately.

Various records within the different county offices are classified as "open records." As such, they can be reviewed and mechanically copied by the public.

See independent auditor's report.

**STEPHENS COUNTY OFFICIALS
AND RESPONSIBILITIES
FOR THE FISCAL YEAR ENDED JUNE 30, 2006**



The Board of County Commissioners is the chief administrative body for the county. County Commissioners are also responsible for maintaining and constructing the county roads and bridges.

The Commissioners must act as a Board when entering into contracts or other agreements affecting the county's welfare. Thus, actions taken by the Board are voted on and approved by a majority of the Commissioners. The Board of County Commissioners' business meetings are open to the public.

As the county's chief administrative body, the three County Commissioners must make major financial decisions and transactions. The Board has the official duty to ensure the fiscal responsibility of the other county officers who handle county funds. The review and approval procedures empowered to the Board of County Commissioners are a means to provide the public with a fiscally efficient system of county government.

See independent auditor's report.

**STEPHENS COUNTY OFFICIALS
AND RESPONSIBILITIES
FOR THE FISCAL YEAR ENDED JUNE 30, 2006**

COUNTY SHERIFF

Jimmy Bruner

(D) Velma

The County Sheriff is responsible for preserving the peace and protecting life and property within the county's jurisdiction. As the county's chief law enforcement officer, the Sheriff has the power and authority to suppress all unlawful disturbances, to apprehend and secure persons charged with felony or breach of peace, and to operate the county jail.

The County Sheriff has the responsibility of serving warrants and processing papers ordered by the District Court.

COUNTY TREASURER

Janice Graham

(D) Bray

All collections by county government from ad valorem taxes and other sources are deposited with the County Treasurer. The County Treasurer collects ad valorem taxes for the county and its political subdivisions. The County Treasurer is authorized to issue delinquent personal property tax warrants and to impose tax liens on real property for delinquent taxes.

To account for county collections and disbursements, the County Treasurer is required to maintain an accurate record of all the monies received and disbursed. The State Auditor and Inspector's Office prescribes all the forms used by the County Treasurer, and at least twice a year inspects the County Treasurer's accounts.

See independent auditor's report.

**STEPHENS COUNTY OFFICIALS
AND RESPONSIBILITIES
FOR THE FISCAL YEAR ENDED JUNE 30, 2006**

COURT CLERK

Connie Elam
(D) Comanche

The Court Clerk has the primary responsibility to record, file, and maintain as permanent records the proceedings of the District Court.

Court proceedings are recorded in the appropriate journal or record docket. All the court proceedings are public information except those related to juvenile, guardianship, adoption, and mental health cases.

The Court Clerk issues marriage licenses, passports, notary certificates, beer and pool hall licenses, and private process server licenses.

Monies from the court fund are identified for distribution by the Court Clerk to the appropriate units of county and state government. Court Clerks use forms and follow procedures prescribed by the Court Administrator's Office, the Oklahoma Supreme Court, and the State Auditor and Inspector.

DISTRICT ATTORNEY

Gene Christian
(D) Duncan

As the chief attorney for county government, the District Attorney acts as the legal advisor to the county officers on matters related to their duties. The District Attorney represents the county in civil litigation. County officials may call upon the District Attorney to clarify a law or request an official interpretation from the Attorney General.

See independent auditor's report.

**STEPHENS COUNTY OFFICIALS
AND RESPONSIBILITIES
FOR THE FISCAL YEAR ENDED JUNE 30, 2006**

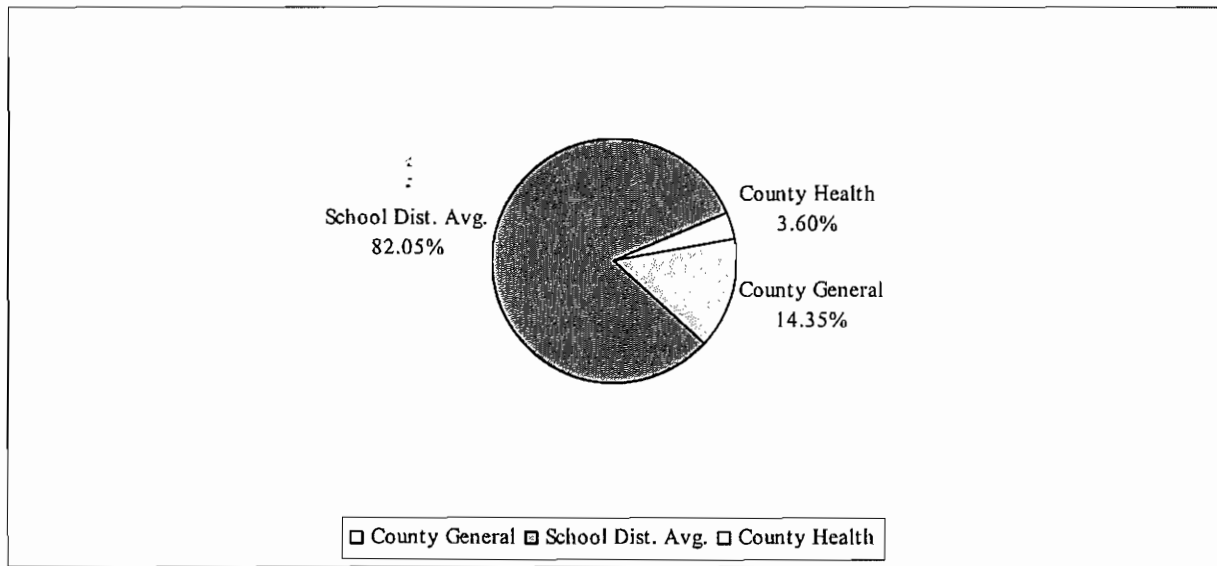
<p>ELECTION BOARD SECRETARY Peggy Winton (D) Duncan</p>
--

The Election Board Secretary is appointed by the State Election Board and is the chief administrative officer of the County Election Board. The County Election Board has direct responsibility for all the ballots used in all elections within the county. The Board also conducts all elections held within the county.

To finance the operation of the County Election Board, the County Excise Board must appropriate sufficient funds annually. The state and counties split the election costs, but counties must pay for any county elections not held concurrently with state elections.

**STEPHENS COUNTY, OKLAHOMA
AD VALOREM TAX DISTRIBUTION
SHARE OF THE AVERAGE MILLAGE
FOR THE FISCAL YEAR ENDED JUNE 30, 2006**

Property taxes are calculated by applying a millage rate to the assessed valuation of property. Millage rates are established by the Oklahoma Constitution. One mill equals one-thousandth of a dollar. For example, if the assessed value of a property is \$1,000.00 and the millage rate is 1.00, then the tax on that property is \$1.00. This chart shows the different entities of the County and their share of the various millages as authorized by the Constitution.



County-Wide Millages		School District Millages						
Co. General	10.22	Gen.	Bldg.	Skg.	Career Tech	Common	Total	
County Health	2.56	Duncan I-1	35.72	5.10	21.43	12.26	4.09	78.60
		Comanche JI-2	35.66	5.09	20.22	12.26	4.09	77.32
		Marlow JI-3	35.77	5.11		12.26	4.09	57.23
		Velma-Alma JI-15	35.69	5.10	8.92	12.26	4.09	66.06
		Empire I-21	36.48	5.21	20.63	12.26	4.09	78.67
		Central High JI-34	36.08	5.15	13.18	12.26	4.09	70.76
		Bray-Doyle JI-42	35.96	5.14	7.27	12.26	4.09	64.72
		Grandview JD-82	36.22	5.18		12.26	4.09	57.75
		Sterling NO.3	36.32	5.19	8.47	11.42	4.09	65.49
		Fox I-74	37.00	5.29	2.97	10.49	4.09	59.84
		Walters I-1	36.55	5.22		12.26	4.09	58.12
		Temple I-101	35.00	5.00	13.27	12.26	4.09	69.62
		Elmore City I-72	35.18	5.03	21.03	11.06	4.09	76.39
		Waurika I-23	35.00	5.00		12.26	4.09	56.35
		Ringling I-14	36.42	5.20		10.49	4.09	56.20

See independent auditor's report.

**STEPHENS COUNTY, OKLAHOMA
COMPUTATION OF LEGAL DEBT MARGIN
FOR THE FISCAL YEAR ENDED JUNE 30, 2006
(UNAUDITED)**

Total net assessed value as of January 1, 2005	<u>\$ 197,105,166</u>
Debt limit - 5% of total assessed value	9,855,258
Total bonds outstanding	
Total judgments outstanding	
Less cash in sinking fund	<u>-</u>
Legal debt margin	<u>\$ 9,855,258</u>

See independent auditor's report.

**STEPHENS COUNTY, OKLAHOMA
RATIO OF NET GENERAL BONDED DEBT TO ASSESSED
VALUE AND NET BONDED DEBT PER CAPITA
FOR THE FISCAL YEAR ENDED JUNE 30, 2006
(UNAUDITED)**

	2006
Estimated population	42,826
Net assessed value as of January 1, 2005	\$ 197,105,166
Gross bonded debt	-
Less available sinking fund cash balance	-
Net bonded debt	\$ -
Ratio of net bonded debt to assessed value	0.00%
Net bonded debt per capita	\$ -

See independent auditor's report.

**STEPHENS COUNTY, OKLAHOMA
 ASSESSED VALUE OF PROPERTY
 FOR THE FISCAL YEAR ENDED JUNE 30, 2006
 (UNAUDITED)**

Valuation Date	Personal	Public Service	Real Estate	Homestead Exemption	Net Value	Estimated Fair Market Value
1/1/2005	\$51,227,224	\$25,121,121	\$132,427,016	\$11,670,195	\$197,105,166	\$1,673,430,578

:

See independent auditor's report.

FINANCIAL SECTION



STATE OF OKLAHOMA
OFFICE OF THE AUDITOR AND INSPECTOR

JEFF A. McMAHAN
State Auditor and Inspector

Independent Auditor's Report

TO THE OFFICERS OF
STEPHENS COUNTY, OKLAHOMA

We have audited the combined totals—all funds of the accompanying Combined Statement of Receipts, Disbursements, and Changes in Cash Balances of Stephens County, Oklahoma, as of and for the year ended June 30, 2006, listed in the table of contents as the basic financial statement. This financial statement is the responsibility of Stephens County's management. Our responsibility is to express an opinion on this financial statement based on our audit.

We conducted our audit in accordance with auditing standards generally accepted in the United States of America and the standards applicable to financial audits contained in *Government Auditing Standards*, issued by the Comptroller General of the United States. Those standards require that we plan and perform the audit to obtain reasonable assurance about whether the financial statement is free of material misstatement. An audit includes examining, on a test basis, evidence supporting the amounts and disclosures in the financial statement. An audit also includes assessing the accounting principles used and significant estimates made by management, as well as evaluating the overall financial statement presentation. We believe that our audit provides a reasonable basis for our opinion. Oklahoma Statutes, in addition to audit responsibilities, assign other responsibilities to the State Auditor and Inspector's Office. Those responsibilities include providing various information technology (IT) support for county government.

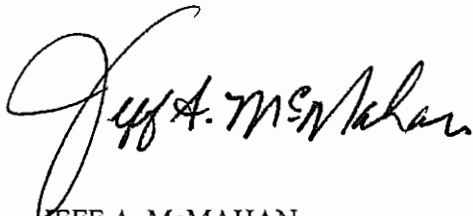
As described in Note 1, this financial statement was prepared using accounting practices prescribed or permitted by Oklahoma state law, which practices differ from accounting principles generally accepted in the United States of America. The effects on the financial statement of the variances between these regulatory accounting practices and accounting principles generally accepted in the United States of America, although not reasonably determinable, are presumed to be material.

In our opinion, because of the matter discussed in the preceding paragraph, the financial statement referred to above does not present fairly, in conformity with accounting principles generally accepted in the United States of America, the financial position of Stephens County as of June 30, 2006, or changes in its financial position for the year then ended.

In our opinion, the financial statement referred to above presents fairly, in all material respects, the combined total of receipts, disbursements, and changes in cash of Stephens County, for the year ended June 30, 2006, on the basis of accounting described in Note 1.

In accordance with *Government Auditing Standards*, we have also issued our report dated March 19, 2007, on our consideration of Stephens County's internal control over financial reporting and on our tests of its compliance with certain provisions of laws, regulations, contracts, and grant agreements and other matters. The purpose of that report is to describe the scope of our testing of internal control over financial reporting and compliance and the results of that testing, and not to provide an opinion on the internal control over financial reporting or on compliance. That report is an integral part of an audit performed in accordance with *Government Auditing Standards* and should be considered in assessing the results of our audit.

Our audit was conducted for the purpose of forming an opinion on the combined total of all funds within the basic financial statement taken as a whole. The combining information is presented for purposes of additional analysis rather than to present the receipts, disbursements, and cash balances of the individual funds. Also, the other supplementary information, as listed in the table of contents, is presented for purposes of additional analysis, and is not a required part of the basic financial statement. Such supplementary information has been subjected to the auditing procedures applied in the audit of the basic financial statement and, in our opinion, is fairly stated, in all material respects, in relation to the basic financial statement taken as a whole. The information listed in the table of contents under Introductory Section has not been audited by us; and accordingly, we express no opinion on it.

A handwritten signature in black ink, reading "Jeff A. McMahar". The signature is written in a cursive, flowing style.

JEFF A. McMAHAN
State Auditor and Inspector

March 19, 2007

118

Basic Financial Statement

**STEPHENS COUNTY, OKLAHOMA
COMBINED STATEMENT OF RECEIPTS, DISBURSEMENTS, AND
CHANGES IN CASH BALANCES
(WITH COMBINING INFORMATION)
FOR THE FISCAL YEAR ENDED JUNE 30, 2006**

	Beginning Cash Balances July 1, 2005	Receipts Apportioned	Disbursements	Ending Cash Balances June 30, 2006
Combining Information:				
County General Fund	\$ 839,910	\$ 3,239,139	\$ 2,727,286	\$ 1,351,763
Highway Cash	7,424,995	7,634,858	6,402,607	8,657,246
Resale Property	179,287	194,343	135,876	237,754
Excess Resale	18,440	6,299		24,739
County Health Department	480,656	533,394	520,161	493,889
Sheriff Service Fee	88,687	207,291	90,202	205,776
Sheriff Training	111	625	735	1
Sheriff Housing	143,074	296,945	299,457	140,562
Sheriff Drug Court Compliance Officer		18,991	14,226	4,765
DARE	8			8
Civil Defense	15,648	59,021	60,184	14,485
Community Service Sentencing Program	2,634			2,634
County Clerk Lien Fee	68,475	33,091	3,312	98,254
County Clerk Records Preservation Fee	130,867	77,890	300	208,457
Treasurer Mortgage Tax Certification Fee	50,121	16,172	21,697	44,596
Assessor Revolving	40,680	21,266	8,843	53,103
Assessor Visual Inspection	7,983	262		8,245
REAP Grant	112	12,426	12,536	2
Free Fair	27,098	89,950	92,770	24,278
Courthouse Building	9,737		4,465	5,272
CDBG Grant		12,838	4,000	8,838
Sheriff VOCA	10,450	35,874	35,079	11,245
Combined Total--All County Funds	<u>\$ 9,538,973</u>	<u>\$ 12,490,675</u>	<u>\$ 10,433,736</u>	<u>\$ 11,595,912</u>

The notes to the financial statement are an integral part of this statement.

**STEPHENS COUNTY, OKLAHOMA
NOTES TO THE FINANCIAL STATEMENT
FOR THE FISCAL YEAR ENDED JUNE 30, 2006**

1. Summary of Significant Accounting Policies

A. Reporting Entity

Counties were created by the Constitution of Oklahoma. One county officer is appointed; however, most county officers are locally elected by their constituents. All county powers are delegated by the state.

The accompanying basic financial statement presents the receipts, disbursements, and changes in cash balances of the total of all funds of Stephens County, Oklahoma. The funds presented as line items are not a part of the basic financial statement, but have been included as supplementary information within the basic financial statement. These separate funds are established by statute, and their operations are under the control of the County officials. The general fund is the County's general operating fund, accounting for all financial resources except those required to be accounted for in another fund. The other funds presented account for financial resources whose use is restricted for specified purposes.

B. Fund Accounting

The County uses funds to report on receipts, disbursements, and changes in cash balances. Fund accounting is designed to demonstrate legal compliance and to aid financial management by segregating transactions related to certain government functions or activities.

Following are descriptions of the funds included as supplementary information within the financial statement:

County General Fund - accounts for the general operations of the government.

Highway Cash - accounts for state, local and miscellaneous receipts and disbursements for the purpose of constructing and maintaining county roads and bridges.

Resale Property - accounts for the collection of interest and penalties on delinquent taxes and the disposition of same as restricted by statute.

Excess Resale - accounts for the amount collected on sale of property in excess of interest, penalty, and taxes due.

County Health Department - accounts for monies collected on behalf of the county health department from ad valorem taxes and state and local revenues.

Sheriff Service Fee - accounts for the collection and disbursement of sheriff process service fees as restricted by statute.

**STEPHENS COUNTY, OKLAHOMA
NOTES TO THE FINANCIAL STATEMENT
FOR THE FISCAL YEAR ENDED JUNE 30, 2006**

Sheriff Training – accounts for the monies collected from sale of unclaimed personal property. The statutes allow for the purchase of equipment, materials, or supplies that may be used in crime prevention, education, training, or programming.

Sheriff Housing – accounts for the collection of monies from the Oklahoma Department of Corrections and disbursements are for the purpose of maintaining the jail.

Sheriff Drug Court Compliance Officer – accounts for grant monies received for salaries for the Drug Court Compliance Officer.

DARE – accounts for state funds disbursed for the purpose of drug education and drug awareness.

Civil Defense – accounts for the receipt and disbursement of funds from state and local government for emergency management director's salary.

Community Service Sentencing Program – accounts for the collection of funding through the Oklahoma Department of Corrections for administrative expenses and supervision of offenders.

County Clerk Lien Fee - accounts for lien collections and disbursements as restricted by statute.

County Clerk Records Preservation Fee – accounts for fees collected for instruments filed in the Registrar of Deeds as restricted by statute for preservation of records.

Treasurer Mortgage Tax Certification Fee - accounts for the collection of fees by the Treasurer for mortgage tax certificates and disbursement of the funds as restricted by statute.

Assessor Revolving - accounts for the collection of fees for copies restricted by state statute.

Assessor Visual Inspection - accounts for the collection and expenditure of monies by the Assessor as restricted by state statute for the visual inspection program.

REAP Grant – accounts for grant monies received for rural fire departments to pay for equipment.

Free Fair – accounts for monies received from rentals and used for the operation of the fairgrounds.

Courthouse Building – accounts for monies received for courthouse improvements.

CDBG Grant – accounts for a grant received for handicap accessibility and tripping hazards at the courthouse and for parking lot repairs at the fairgrounds.

**STEPHENS COUNTY, OKLAHOMA
NOTES TO THE FINANCIAL STATEMENT
FOR THE FISCAL YEAR ENDED JUNE 30, 2006**

Sheriff VOCA – accounts for grant monies received to pay salaries of victim’s advocate for the Sheriff’s department.

The County Treasurer collects and remits material amounts of intergovernmental revenues and ad valorem tax revenue for other budgetary entities, including emergency medical districts, school districts and cities and towns. The cash receipts and disbursements attributable to those other entities do not appear in funds on the County’s financial statement; those funds play no part in the County’s operations.

C. Basis of Accounting

The basic financial statement is prepared on a basis of accounting wherein amounts are recognized when received or disbursed. This basis of accounting differs from accounting principles generally accepted in the United States of America, which require revenues to be recognized when they become available and measurable or when they are earned, and expenditures or expenses to be recognized when the related liabilities are incurred. This cash basis financial presentation is not a comprehensive measure of economic condition or changes therein.

D. Budget

Under current Oklahoma Statutes, the general fund is the only fund required to adopt a formal budget. On or before the first Monday in July of each year, each officer or department head submits an estimate of needs to the governing body. The budget is approved by fund, office, or department and object. The County Board of Commissioners may approve changes of appropriations within the fund by office or department and object. To increase or decrease the budget by fund requires approval by the County Excise Board.

For the highway funds and other funds, which are not required to adopt a formal budget, appropriations are made on a monthly basis, according to the funds then available.

E. Cash

The County pools the cash of its various funds in maintaining its bank accounts. However, cash applicable to a particular fund is readily identifiable on the County’s books. The balance in the pooled cash accounts is available to meet current operating requirements.

State statutes require financial institutions with which the County maintains funds to deposit collateral securities to secure the County’s deposits. The amount of collateral securities to be pledged is established by the County Treasurer; this amount must be at least the amount of the deposit to be secured, less the amount insured (by, for example, the FDIC).

**STEPHENS COUNTY, OKLAHOMA
NOTES TO THE FINANCIAL STATEMENT
FOR THE FISCAL YEAR ENDED JUNE 30, 2006**

F. Investments

The County Treasurer has been authorized by the County's governing board to make investments. By statute (62 O.S. § 348.1 and § 348.3), the following types of investments are allowed:

- U.S. Government obligations
- Certificates of deposit
- Savings accounts
- G.O. bonds issued by counties, municipalities or school districts
- Money judgments against counties, municipalities or school districts
- Bonds and revenue notes issued by a public trust when the beneficiary of the trust is a county, municipality or school district
- Negotiable certificates of deposit
- Prime bankers acceptance which are eligible for purchase by the Federal Reserve System
- Prime commercial paper with a maturity of 180 days or less
- Repurchase agreements
- Money market funds regulated by the Securities and Exchange Commission and which investments consist of the above-mentioned types of investments

All investments must be backed by the full faith and credit of the United States Government, the Oklahoma State Government, fully collateralized, or fully insured.

G. Compensated Absences

Stephens County Sheriff Department Jailers Only			
Years of Service	Vacation Leave	Years of Service	Vacation Leave
1-5 Years	10 days	1-5 Years	80 hours
5-15 Years	15 days	5-15 Years	120 hours
15-20 Years	18 days	15-20 Years	144 hours
20-25 Years	20 days	20-25 Years	160 hours
Over 25 Years	25 days	Over 25 Years	200 hours

Vacation benefits are earned by the employee during the year and may not be accumulated. Vacation leave is accrued monthly.

Sick leave benefits are accrued at the rate of 1 day for each full month of service and 8 hours for Stephens County Sheriff Department Jailers. Employees may accumulate up to 130 days. Sick leave is not paid upon termination.

**STEPHENS COUNTY, OKLAHOMA
NOTES TO THE FINANCIAL STATEMENT
FOR THE FISCAL YEAR ENDED JUNE 30, 2006**

2. Ad Valorem Tax

The County's property tax is levied each October 1 on the assessed value listed as of January 1 of the same year for all real and personal property located in the County, except certain exempt property. Assessed values are established by the County Assessor within the prescribed guidelines established by the Oklahoma Tax Commission and the State Equalization Board. Title 68 O.S. § 2820.A. states, ". . . Each assessor shall thereafter maintain an active and systematic program of visual inspection on a continuous basis and shall establish an inspection schedule which will result in the individual visual inspection of all taxable property within the county at least once each four (4) years."

The assessed property value as of January 1, 2005, was approximately \$197,105,166.

Per Article 10, 8A, with the repeal of personal property tax, the millages with the adjustment factor are 10.22 mills for general fund operations and 2.56 mills for county health department. In addition, the County collects the ad valorem taxes assessed by cities and towns and school districts and remits the ad valorem taxes collected to the appropriate taxing units.

Taxes are due on November 1 following the levy date, although they may be paid in two equal installments. If the first half is paid prior to January 1, the second half is not delinquent until April 1. Unpaid real property taxes become a lien upon said property on October 1 of each year.

Unpaid delinquent personal property taxes are published usually in May. If the taxes are not paid within 30 days from publication, they shall be placed on the personal tax lien docket.

Current year tax collections for the year ended June 30, 2006, were approximately 94.72 percent of the tax levy.

3. Fuel Tax

The County receives major funding for roads and highways from a state imposed fuel tax. Taxes are collected by the Oklahoma Tax Commission. Taxes are imposed on all gasoline, diesel, and special fuel sales statewide. The County's share is determined on formulas based on the County population, road miles, and land area and is remitted to the County monthly. These funds are earmarked for roads and highways only and are accounted for in the county highway fund.

**STEPHENS COUNTY, OKLAHOMA
NOTES TO THE FINANCIAL STATEMENT
FOR THE FISCAL YEAR ENDED JUNE 30, 2006**

4. Risk Management

The County is exposed to the various risks of loss shown in the following table:

Types of Loss	Method of Management	Risk of Loss Retained
General Liability <ul style="list-style-type: none"> • Torts • Errors and Omissions • Law Enforcement Officers Liability • Vehicle 	The County participates in a public entity risk pool: Association of County Commissioners of Oklahoma-Self-Insurance Group. (See ACCO-SIG.)	If claims exceed the authorized deductibles, the County could have to pay its share of any pool deficit. A judgment could be assessed for claims in excess of the pool's limits.
Physical Plant <ul style="list-style-type: none"> • Theft • Damage to Assets • Natural Disasters 		
Workers' Compensation <ul style="list-style-type: none"> • Employees' Injuries 	The County carries commercial insurance.	A judgment could be assessed for claims in excess of coverage.
Employee <ul style="list-style-type: none"> • Medical • Disability • Dental • Life 	The County carries commercial insurance.	None

ACCO-SIG - The pool operates as a common risk management and insurance program and is to be self-sustaining through member premiums. Each participating county chooses a \$10,000, \$25,000, or a \$50,000 deductible amount. The County has chosen a \$25,000 deductible for each insured event as stated in the County's "Certificate of Participation." The risk pool will pay legitimate claims in excess of the deductible amount for replacement value up to \$100,000 for property, and up to \$500,000 for general liability. The pool has acquired commercial reinsurance in the amount of \$1,000,000 to cover claims that exceed the pool's risk retention limits. Settled claims have not exceeded insurance coverage for each of the past three fiscal years. There have been no significant reductions in coverage from the prior fiscal year.

Commercial Insurance - The County obtains commercial insurance coverage to pay legitimate workers' compensation claims and employees' insurance. Settled claims have not exceeded insurance coverage for each of the past three fiscal years. There have been no significant reductions in coverage from the prior fiscal year.

**STEPHENS COUNTY, OKLAHOMA
NOTES TO THE FINANCIAL STATEMENT
FOR THE FISCAL YEAR ENDED JUNE 30, 2006**

5. Long-term Obligations

Capital Leases

The County acquires road machinery and equipment through lease-purchase agreements financed by the Oklahoma Department of Transportation and/or the equipment vendors or their assignees pursuant to the provisions of 69 O.S. § 636.1 through § 636.7. Lease agreements entered into with the Oklahoma Department of Transportation (ODOT) are interest free. However, starting in January 1997, ODOT began charging a one-time fee of 3% on all pieces of machinery subsequently acquired.

6. Pension Plan

Plan Description. The County contributes to the Oklahoma Public Employees Retirement Plan (the Plan), a cost-sharing, multiple-employer defined benefit pension plan administered by the Oklahoma Public Employees Retirement System (OPERS). Benefit provisions are established and amended by the Oklahoma Legislature. The Plan provides retirement, disability, and death benefits to Plan members and beneficiaries. Title 74, Sections 901 through 943, as amended, establishes the provisions of the Plan. OPERS issues a publicly available financial report that includes financial statements and supplementary information. That report may be obtained by writing OPERS, P.O. Box 53007, Oklahoma City, Oklahoma 73105 or by calling 1-800-733-9008.

Funding Policy. The contribution rates for each member category are established by the Oklahoma Legislature and are based on an actuarial calculation which is performed to determine the adequacy of contribution rates. County employees are required to contribute between 3.5% and 8.5% of earned compensation. The County contributes between 6.5% and 11.5% of earned compensation. Elected officials could contribute between 4.5% and 10% of their entire compensation. The County contributes 11.5% of earned compensation for elected officials. The County's contributions to the Plan for the years ending June 30, 2006, 2005, and 2004 were \$439,020, \$356,752, and \$333,328, respectively, equal to the required contributions for each year.

7. Other Post Employment Benefits (OPEB)

In addition to the pension benefits described in the Pension Plan note, OPERS provides post-retirement health care benefits of up to \$105 each for retirees who are members of an eligible group plan. These benefits are funded on a pay-as-you-go basis as part of the overall retirement benefit. OPEB expenditure and participant information is available for the state as a whole; however, information specific to the County is not available nor can it be reasonably estimated.

**STEPHENS COUNTY, OKLAHOMA
NOTES TO THE FINANCIAL STATEMENT
FOR THE FISCAL YEAR ENDED JUNE 30, 2006**

8. Contingent Liabilities

Amounts received or receivable from grantor agencies are subject to audit and adjustment by grantor agencies, primarily the federal government. Any disallowed claims, including amounts already collected, may constitute a liability of the applicable fund. The amount, if any, of expenditures which may be disallowed by the grantor cannot be determined at this time; although, the County expects such amounts, if any, to be immaterial.

The County is a defendant in various lawsuits. Although the outcome of these lawsuits is not presently determinable, in management's opinion, the resolution of these matters will not have a material adverse effect on the financial condition of the County.

:

OTHER SUPPLEMENTARY INFORMATION

STEPHENS COUNTY, OKLAHOMA
COMPARATIVE SCHEDULE OF RECEIPTS, EXPENDITURES, AND
CHANGES IN CASH BALANCES—BUDGET AND ACTUAL—BUDGETARY BASIS—
GENERAL FUND
FOR THE FISCAL YEAR ENDED JUNE 30, 2006

	General Fund			
	Original Budget	Final Budget	Actual	Variance
Beginning Cash Balances	\$ 839,910	\$ 839,910	\$ 839,910	\$ -
Less: Prior Year Outstanding Warrants	(50,083)	(50,083)	(50,083)	
Less: Prior Year Encumbrances	(57,707)	(57,707)	(54,769)	2,938
Beginning Cash Balances, Budgetary Basis	<u>732,120</u>	<u>732,120</u>	<u>735,058</u>	<u>2,938</u>
Receipts:				
Ad Valorem Taxes	1,831,286	1,831,286	1,965,024	133,738
Charges for Services	297,670	297,670	335,791	38,121
Intergovernmental Revenues	336,952	336,952	417,132	80,180
Miscellaneous Revenues	213,465	214,693	521,192	306,499
Total Receipts, Budgetary Basis	<u>2,679,373</u>	<u>2,680,601</u>	<u>3,239,139</u>	<u>558,538</u>
Expenditures:				
District Attorney	4,000	4,000	1,723	2,277
County Sheriff	368,339	379,339	379,338	1
County Treasurer	158,698	158,698	158,209	489
County Commissioners	3,000	3,000	2,108	892
OSU Extension	73,951	73,951	73,950	1
County Clerk	300,363	300,363	298,430	1,933
Court Clerk	180,582	180,582	176,463	4,119
County Assessor	150,698	150,698	149,855	843
Revaluation of Real Property	323,929	282,320	233,269	49,051
District Court	3,000	6,500	5,517	983
General Government	1,667,240	1,689,563	1,055,245	634,318
Excise Equalization Board	6,802	6,802	4,856	1,946
County Election Board	77,622	80,636	74,581	6,055

continued on next page

The accompanying notes to the other supplementary information are an integral part of this schedule.
See independent auditor's report.

STEPHENS COUNTY, OKLAHOMA
COMPARATIVE SCHEDULE OF RECEIPTS, EXPENDITURES, AND
CHANGES IN CASH BALANCES—BUDGET AND ACTUAL—BUDGETARY BASIS—
GENERAL FUND
FOR THE FISCAL YEAR ENDED JUNE 30, 2006

continued from previous page

	Original Budget	Final Budget	Actual	Variance
Charity	57,724	60,724	45,727	14,997
Wildlife Trapper	2,400	2,400	2,400	-
County Audit Budget Account	20,144	20,144	19,710	434
Free Fair Budget Account	13,001	13,001	10,325	2,676
Total Expenditures, Budgetary Basis	<u>3,411,493</u>	<u>3,412,721</u>	<u>2,691,706</u>	<u>721,015</u>
Excess of Receipts and Beginning Cash Balances Over Expenditures, Budgetary Basis	<u>\$ -</u>	<u>\$ -</u>	1,282,491	<u>\$ 1,282,491</u>
Reconciliation to Statement of Receipts, Disbursements, and Changes in Cash Balances				
Add: Current Year Encumbrances			58,534	
Add: Current Year Outstanding Warrants			<u>10,738</u>	
Ending Cash Balance			<u>\$ 1,351,763</u>	

The accompanying notes to the other supplementary information are an integral part of this schedule.
See independent auditor's report.

STEPHENS COUNTY, OKLAHOMA
COMPARATIVE SCHEDULE OF RECEIPTS, EXPENDITURES, AND
CHANGES IN CASH BALANCES—BUDGET AND ACTUAL—BUDGETARY BASIS—
COUNTY HEALTH DEPARTMENT FUND
FOR THE FISCAL YEAR ENDED JUNE 30, 2006

	County Health Department Fund			
	Original	Final	Actual	Variance
	Budget	Budget		
Beginning Cash Balances	\$ 480,656	\$ 480,656	\$ 480,656	\$ -
Less: Prior Year Outstanding Warrants	(1,326)	(1,326)	(1,326)	
Less: Prior Year Encumbrances	(90,505)	(90,505)	(73,187)	17,318
Beginning Cash Balances, Budgetary Basis	<u>388,825</u>	<u>388,825</u>	<u>406,143</u>	<u>17,318</u>
Receipts:				
Ad Valorem Taxes	458,717	458,717	492,140	33,423
Charges for Services		21,701	21,701	
Intergovernmental Revenue			19,426	19,426
Miscellaneous Revenues			127	127
Total Receipts, Budgetary Basis	<u>458,717</u>	<u>480,418</u>	<u>533,394</u>	<u>52,976</u>
Expenditures:				
Health and Welfare	847,542	869,243	507,211	362,032
Total Expenditures, Budgetary Basis	<u>847,542</u>	<u>869,243</u>	<u>507,211</u>	<u>362,032</u>
Excess of Receipts and Beginning Cash Balances Over Expenditures, Budgetary Basis	<u>\$ -</u>	<u>\$ -</u>	432,326	<u>\$ 432,326</u>
Reconciliation to Statement of Receipts, Disbursements, and Changes in Cash Balances				
Add: Current Year Encumbrances			60,537	
Add: Current Year Outstanding Warrants			1,026	
Ending Cash Balance			<u>\$ 493,889</u>	

The accompanying notes to the other supplementary information are an integral part of this schedule. See independent auditor's report.

**STEPHENS COUNTY, OKLAHOMA
NOTES TO OTHER SUPPLEMENTARY INFORMATION
FOR THE FISCAL YEAR ENDED JUNE 30, 2006**

Budgetary Schedules

The Comparative Schedule of Receipts, Expenditures, and Changes in Cash Balances—Budget and Actual—Budgetary Basis, for the General Fund presents comparisons of the legally adopted budget with actual data. The "actual" data, as presented in the comparison of budget and actual, will differ from the data as presented in the Combined Statement of Receipts, Disbursements, and Changes in Cash Balances with Combining Information because of adopting certain aspects of the budgetary basis of accounting and the adjusting of encumbrances and outstanding warrants to their related budget year.

Encumbrance accounting, under which purchase orders, contracts, and other commitments for the expenditure of monies are recorded in order to reserve that portion of the applicable appropriation, is employed as an extension of formal budgetary integration in these funds. At the end of the year, unencumbered appropriations lapse.

INTERNAL CONTROL AND COMPLIANCE SECTION



STATE OF OKLAHOMA
OFFICE OF THE AUDITOR AND INSPECTOR

JEFF A. McMAHAN
State Auditor and Inspector

**Report on Internal Control Over Financial Reporting and on Compliance and Other Matters
Based on an Audit of Financial Statements Performed in Accordance With
*Government Auditing Standards***

TO THE OFFICERS OF
STEPHENS COUNTY, OKLAHOMA

We have audited the combined totals—all funds of the accompanying Combined Statement of Receipts, Disbursements, and Changes in Cash Balances of Stephens County, Oklahoma, as of and for the year ended June 30, 2006, which comprises Stephens County's basic financial statement, prepared using accounting practices prescribed or permitted by Oklahoma state law, and have issued our report thereon dated March 19, 2007. Our report on the basic financial statement was adverse because the statement is not a presentation in conformity with accounting principles generally accepted in the United States of America. Also, our report describes certain responsibilities of the State Auditor and Inspector's Office other than audit responsibilities. We conducted our audit in accordance with auditing standards generally accepted in the United States of America and the standards applicable to financial audits contained in *Government Auditing Standards*, issued by the Comptroller General of the United States.

Internal Control Over Financial Reporting

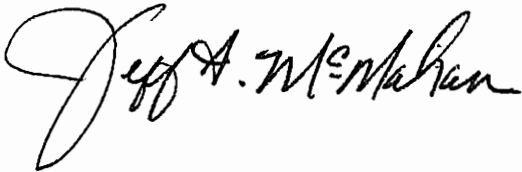
In planning and performing our audit, we considered Stephens County's internal control over financial reporting in order to determine our auditing procedures for the purpose of expressing our opinion on the financial statement and not to provide an opinion on the internal control over financial reporting. However, we noted a certain matter involving the internal control over financial reporting and its operation that we consider to be a reportable condition. Reportable conditions involve matters coming to our attention relating to significant deficiencies in the design or operation of the internal control over financial reporting that, in our judgment, could adversely affect Stephens County's ability to initiate, record, process, and report financial data consistent with the assertions of management in the financial statement. The reportable condition is described in the accompanying schedule of findings and responses as item 2003-1.

A material weakness is a reportable condition in which the design or operation of one or more of the internal control components does not reduce to a relatively low level the risk that misstatements caused by error or fraud in amounts that would be material in relation to the financial statement being audited may occur and not be detected within a timely period by employees in the normal course of performing their assigned functions. Our consideration of the internal control over financial reporting would not necessarily disclose all matters in the internal control that might be reportable conditions and, accordingly, would not necessarily disclose all reportable conditions that are also considered to be material weaknesses. However, we consider the reportable condition described above to be a material weakness. We also noted a certain matter that we reported to the management of Stephens County, which is included in Section 2 of the schedule of findings and responses contained in this report.

Compliance and Other Matters

As part of obtaining reasonable assurance about whether Stephens County's financial statement is free of material misstatement, we performed tests of its compliance with certain provisions of laws, regulations, contracts, and grant agreements, noncompliance with which could have a direct and material effect on the determination of financial statement amounts. However, providing an opinion on compliance with those provisions was not an objective of our audit, and accordingly, we do not express such an opinion. The results of our tests disclosed no instances of noncompliance or other matters that are required to be reported under *Government Auditing Standards*.

This report is intended solely for the information and use of the management of Stephens County and should not be used for any other purpose. This report is also a public document pursuant to the Oklahoma Open Records Act (51 O.S., section 24A.1 et seq.), and shall be open to any person for inspection and copying.

A handwritten signature in black ink that reads "Jeff A. McMahon". The signature is written in a cursive style with a large, looping initial "J".

JEFF A. McMAHAN
State Auditor and Inspector

March 19, 2007

**STEPHENS COUNTY, OKLAHOMA
SCHEDULE OF FINDINGS AND RESPONSES
FOR THE FISCAL YEAR ENDED JUNE 30, 2006**

SECTION 1—Findings related to the Report on Internal Control Over Financial Reporting and on Compliance and Other Matters Based on an Audit of Financial Statements Performed in Accordance With *Government Auditing Standards*

Finding 2003-1 – Segregation of Duties (Repeat Finding)

Criteria: Accountability and stewardship are overall goals in evaluating management's accounting for funds. To help ensure a proper accounting of funds, the duties of receiving, receipting, recording, and depositing cash and checks should be segregated.

Condition: Based on inquiries of County personnel, it was noted that the duties of receiving, receipting, recording, and depositing collections were not adequately segregated in the County Sheriff's office.

Effect: This condition could result in unrecorded transactions, misstated financial reports, undetected errors, or misappropriation of assets.

Recommendation: We recommend management be aware of this condition and realize that the concentration of duties and responsibilities in a limited number of individuals is not desirable from a control point of view. Under these conditions, the most effective controls lie in management's knowledge of office operations and periodic review of those operations.

Views of responsible officials and planned corrective actions: We concur with the auditor's comments and will conduct periodic reviews of County office operations.

SECTION 2—This section contains certain matters not required to be reported in accordance with *Government Auditing Standards*. However, we believe these matters are significant enough to bring to management's attention. We recommend that management consider these matters and take appropriate corrective action.

2006-1 – Official Depository Receipts and Vouchers

Criteria: An aspect of proper controls over receipts and vouchers is that the computer system account for the consecutive order of the receipts and vouchers.

Condition: The official depository accounts for the County Treasurer and County Clerk are accounted for on a local computer vendor's accounting package for receipts and vouchers issued by these officers. The test of vouchers and receipts revealed that the County Treasurer and County Clerk's computer system allows a deputy to reissue receipt numbers.

Effect: Ineffective controls over receipt and voucher numbers, with regard to the accounting system, could lead to possible misappropriation of assets.

**STEPHENS COUNTY, OKLAHOMA
SCHEDULE OF FINDINGS AND RESPONSES
FOR THE FISCAL YEAR ENDED JUNE 30, 2006**

Recommendation: We recommend the County Treasurer and County Clerk consult with the computer vendor to determine the controls that should be implemented to safeguard assets from possible manipulation arising from issuing receipts with the same numbers.

Views of responsible officials and planned corrective actions: The County Treasurer will contact the computer vendor to determine what can be changed in the computer system to safeguard County assets from manipulation. The County Clerk or one of her designated deputies will initial any changes made to receipts that have errors and copies of these receipts will be maintained.

: